

Solar Ventilation System Design for SBS West

1st Semester Proposal Final Report

Northern Arizona University

November 30, 2018

BIO-INSPIRED Energy Efficiency

By:

**Hani Alharbi
Kyle Matsuoka
Taylor Mellon
Talon Mills**

DISCLAIMER

This report was prepared by students as part of a university course requirement. While considerable effort has been put into the project, it is not the work of licensed engineers and has not undergone the extensive verification that is common in the profession. The information, data, conclusions, and content of this report should not be relied on or utilized without thorough, independent testing and verification. University faculty members may have been associated with this project as advisors, sponsors, or course instructors, but as such they are not responsible for the accuracy of results or conclusions.

EXECUTIVE SUMMARY

The Social Behavioral Sciences (SBS) West building at the Northern Arizona University (NAU) mountain campus is not up to the ventilation code standard for modern buildings and is inefficient with its annual energy usage, with heating and cooling being a major factor of consumption. The Bio-Inspired Energy Efficiency (BEE) team is to develop an electro-mechanical system to bring SBS West up to ventilation standards and reduce its energy consumption through analyzing the natural world. The team will use a pre-existing Solar Ventilation design developed by members of the team to implement into SBS West. The design will be paired with the current HVAC system to improve efficiency of the system as a whole, along with fulfilling the ventilation standards. The system involves using adjustable vents and solar panels to generate electricity using natural air and the sun. For ventilation, the system utilizes motors and/or temperature dependent components to expand and contract the panel based on the ambient temperature and the temperature inside of the building. The outcome of the system is to ease the use of the current HVAC system, generate addition electricity to aid the current system and bring the building up to current ventilation standards. Additionally, the ventilation and solar array will ease the cost of the system's implementation. The process of determining this final design includes preliminary research, project management, understanding the issue presented, concept generation, analytical calculation, cost analysis, resolving potential ethical issues, prototyping and future work. Presented in the following document is the process that was followed to reach the Rooftop Ridge Ventilation Housing to replace the current system installed at SBS West.

TABLE OF CONTENTS

DISCLAIMER	2
EXECUTIVE SUMMARY	3
1 BACKGROUND	7
1.1 Introduction	7
1.1.2 Motivation	7
1.2 Project Description	7
1.2.1 Needs Statement	8
1.3 Original System	8
1.1.1 Original System Operation	8
1.1.2 Existing System	8
1.1.3 Current Ventilation	9
2 REQUIREMENTS	10
2.1 CRs	10
2.2 Engineering Requirements	11
2.3 Testing Procedures	12
2.3.1 5-Year Pay off	12
2.3.2 Equivalent Thermal Output	12
2.3.3 Energy Efficiency	12
2.3.4 Size	12
2.3.5 Easy to Repair and Replace Parts	13
2.3.6 Temperature Management	13
2.3.7 System Run Time	13
2.3.8 Selective Heating and Cooling	13
2.3.9 Display Usage	13
2.3.10 Mechanical System	13
2.3.11 Noise Pollution	14
2.3.12 Solar Simulations	14
2.4 House of Quality	14
3 EXISTING DESIGNS	14
3.1 Design Research	14
3.1.1 Data Furnace	14
3.1.2 Utilizing Pre-Existing systems	15
3.1.3 Radiative Systems	15
3.1.4 Beyond Solar Panels	15
3.1.5 Breathable Workout Suit	16
3.2 System Level	16

3.2.1 Photovoltaic Solar Panels	16
3.2.2 Commercial Ventilation Systems	16
3.2.3 Active Monitoring Systems	16
3.3 Functional Decomposition	17
3.3.1 Problem Decomposition	17
3.3.2 Black Box model	17
3.3.3 Hypothesized Functional Model	18
3.4 Subsystem Level	18
3.4.1 Air Filtration	19
3.4.1.a Fiberglass Air Filter	19
3.4.1.b Polyester and Pleated Filters	19
3.4.1.c High Efficiency Particulate Arrestance (HEPA) Filters	19
3.4.2 Vent Style	19
3.4.2.a Box Vent	19
3.4.2.b Wind Turbines	19
3.4.2.c Ridge Vent	20
3.4.3 Actuation Methods	20
3.4.3.a Hydraulics	20
3.4.3.b Gear Trains	20
3.4.3.c Smart Materials	20
4 DESIGNS CONSIDERED	21
4.1 Design Category #1: Smart Material Actuation	21
4.2 Design Category #2: Vent Specification	22
4.3 Design Category #3: Bio-Inspired Designs	22
4.4 Morphological Matrix Generation and Analysis	23
5 DESIGN SELECTED	25
5.1 Rationale for Design Selection	25
5.2 Design Description	27
6 PROPOSED DESIGN	28
7 CONCLUSION AND FUTURE WORK	29
REFERENCES	30
APPENDIX A	32
APPENDIX B	33
APPENDIX C	35
APPENDIX D	41

APPENDIX E

42

APPENDIX F

46

1 BACKGROUND

In this section background information, motivation for the project, and details of the processes taken by the team to generate the final design are laid out. The processes used to generate the final design are separated into sections which depict, in detail, the steps taken for each process.

1.1 Introduction

The Bio-Inspired Energy Efficiency (BEE) team has been tasked with making Northern Arizona University (NAU) mountain campus more energy efficient. The team decided to focus on Heating, Ventilation and Air Conditioning (HVAC) systems, specially focusing on the Social and Behavioral Science West (SBS West) building. This building was selected because it is not up to code with current ventilation standards and the current HVAC system in the building is outdated and energy inefficient. The client for this project is Jon Heitzinger, whom coordinates with NAU facilities maintenance to assist in resolving issues such as code violations and energy inefficiencies. Any steps taken towards the completion of this project will be reviewed by the client. Upon meeting with the client on September 28th, 2018 it was decided that ventilation was to be the focus of this design project. Currently this project has no outside sponsorship, besides the client and the Mechanical Engineering Department at NAU. Efforts to receive additional sponsorship are still being taken and are expected to continue throughout the entirety of the project. Upon completion of this project, documentation of the project will be provided to the client and professors for evaluation, along with a presentation. Finally, a presentation will be given at NAU's Undergraduate Symposium to communicate all findings regarding the final design, and to provide a networking platform.

1.1.2 Motivation

Universities have a substantial amount of buildings, which makes HVAC systems a vital factor when analyzing a University's energy consumption and efficiency. With Northern Arizona University (NAU) mountain campus being located at 7,000 feet and experiencing all seasons, HVAC systems are important and necessary. Through studying the effects of equipment size, surrounding environment, and fiscal impacts using thermodynamics, kinetics, and economics, an innovative design with efficient power and heating can be produced. Outdated HVAC systems are costing NAU financially and environmentally. By improving or redesigning current HVAC systems in older buildings, such as SBS west, through modern concepts and designs, NAU can resolve these costs by reducing annual expenses and their carbon footprint.

1.2 Project Description

In this section, an updated problem statement is provided. The team was tasked to find ways to bring SBS West to the proper ventilation codes and increase the energy efficiency at Northern Arizona University (NAU). Additionally, the team has set a goal to use aspects of nature to inspire designs. The problem statement can be divided up into three sections: needs statement, problem definition, and constraints.

1.2.1 Needs Statement

The NAU Mountain Campus has buildings which are not up to the proper ventilation codes and are inefficient with their energy consumption. Northern Arizona University has buildings on campus that are over 100 years old. Some of these buildings still have systems from the mid-1900s, which have been deemed energy inefficient, compared to modern technology. Jon Hitzinger, our client and a stakeholder, has tasked the team with reducing the energy consumption of SBS west by bringing the building up to ventilation code. He assigned the team to construct an electro-mechanical solution that would provide the building with present day standards.

1.3 Original System

The final design, previously developed by members of the BEE team, was a Solar Radiation and Ventilation system. This system met the desired criteria to be effective and successful for the previous client. The original design can be seen in figure 1.

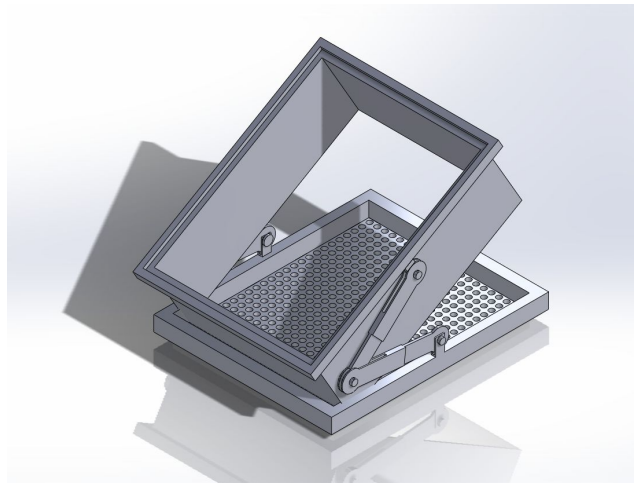


Figure 1: Original Design

1.1.1 Original System Operation

The Solar Radiation and Ventilation system works by using solar panels to generate electricity and the sun to radiate heat. This system also allows for different levels of ventilation depending on the outside climate. The ventilation is controlled by a set of arms that is controlled by motors and will extend or contract depending on user defined temperature of building. This system excels in the two main criteria, which include reducing the energy usage of the building and a having a short pay off.

1.1.2 Existing System

Based on an audit that the team was provided, the HVAC system in SBS West currently runs off pneumatic systems that runs constantly, all year to keep the temperature of the building at a constant temperature of 72 °F. To allow outdoor air to enter the building, a pneumatic motor controls the position of dampers to regulate the intake of outdoor air. During the summer, these

dampers are fully closed to retain the air inside the building and open during the spring to allow for ventilation of the building [1]. The pneumatic motor can be seen in figure 2.



Figure 2: Pneumatic Motor

1.1.3 Current Ventilation

Currently, the SBS West buildings ventilation does not work. As a result, the building does not meet proper ventilation standards. The buildings ventilation system consists of exhaust/relief vents along with intake vents. The vents are located on the top of the building with a ridge covering them to prevent debris from falling in. The intake vents are located on the south side of the building while the exhaust/relief vents are located on the north side of the building. Figure 3 shows the blueprints of the intake and exhaust/relief vents of the building.

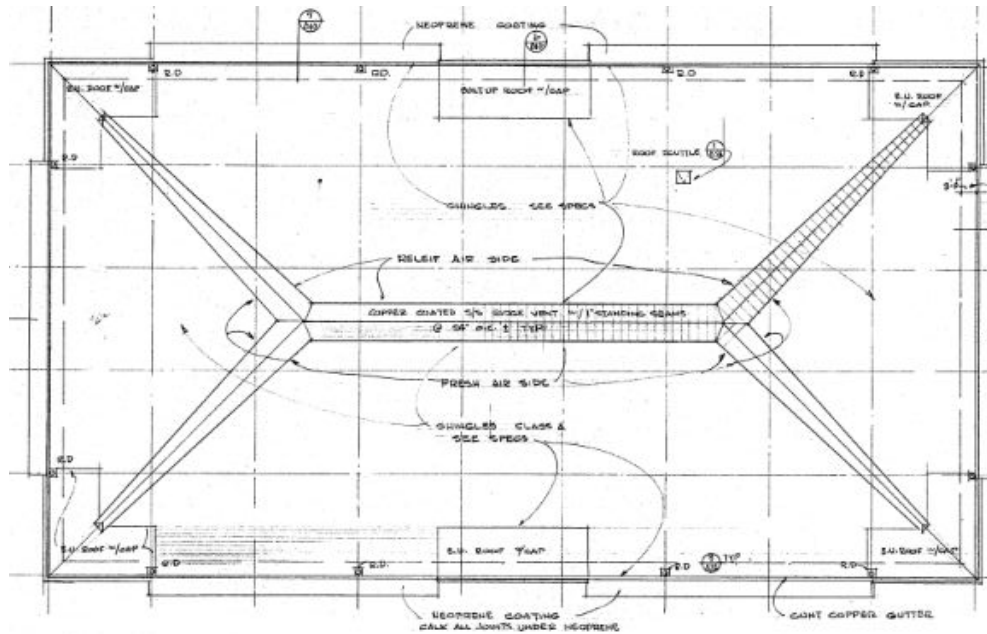


Figure 3: Intake and Exhaust/Relief Vents

2 REQUIREMENTS

Given the project description the team was able to generate customer requirements and engineering requirements. These were then used to create a house of quality model to compare the requirements. Additionally, design solutions for HVAC systems were found and benched marked versus the customer requirements.

2.1 CRs

The customer requirements are a list of wants and needs based on the requirements of the client and problem statement. These requirements are given in no specific order.

1. **Must be bio-inspired:** The system must incorporate aspects of a bio-inspired design. Ideas can be taken from how nature works and incorporated into an engineering design.
2. **Must increase energy efficiency:** The system must reduce the overall energy consumption of the building resulting in an increase in energy efficiency.
3. **Must have a short pay-off:** The system must generate enough energy so that the system can help the building save enough money to pay itself off in a certain number of years depending on the total cost of the system. If the system cost is under \$500,000, then the system must pay itself off in less than five years. If the system cost is over \$500,000, then the system must pay itself off in less than ten years. Additionally, as depicted by the client, cost of some aspects may be neglected because bringing the building up to code trumps the costs.
4. **Must provide the same services as the current system:** The system must provide the same heating and cooling as the current system. It must have the same inputs and outputs as the current system.
5. **Must be easy to maintain:** The system must be easy to perform maintenance and repairs when needed.

6. **Must be space efficient:** The system must not take up more space than the current system.
7. **Must not generate excess noise pollution:** The system must not generate a lot of noise. This is to provide faculty and students an appropriate work environment.
8. **Must have adjustable times:** The system must be able to turn on and off depending on the demand times for heating and cooling.
9. **Must be safe:** The system must be safe to use and safe for the public.
10. **Must bring building up to code:** The system must bring the SBS West building up to its ventilation code.

2.2 Engineering Requirements

The engineering characteristics are derived from the customer requirements that include quantifiable statements.

1. **5-year payoff estimate (5 years):** Depending on the total cost of the system, it must provide a financial saving based on the consumption of energy on the building. This is again not including some aspects of the design because meeting the ventilation codes are more important than the cost.
2. **New Thermal output = Old thermal output (72 °F):** With the amount of consumed energy being reduced, the new system's thermal output must be equal to the old system's thermal output.
3. **Energy efficient (EER):** The system must increase the energy efficiency of the building by reducing the amount of energy being used.
4. **Size ≤ Current size (ft^3 or m^3):** The size of the new system must be equal to or less than the size of the old system.
5. **Easy to repair/ replace parts and check systems:** The system must be able to provide easy maintenance and repairs to ensure proper functioning of the system.
6. **Temperature Management (°F):** The system must be able to control the temperature of the building to ensure a comfortable work environment for people in the building.
7. **System runtime (turn on and off):** The system must be able to turn off and on depending on the demands of heating and cooling of the building. Energy must not be wasted when there is not a need to heating or cooling.
8. **Selective heating/cooling (°F):** The system must be able to heat and cool the building depending on the demands. If no one is in the building, then the system shuts off.
9. **Display usage (°F and kWh):** The system can display how much energy is being generated and used while also displaying the temperature of the building.
10. **Mechanical system:** The system must be mechanically engineered with bio-inspired design incorporated into the design
11. **Reduce Noise Pollution (<50 dBA):** The system must not produce excess noise pollution. This is to provide faculty and students a comfortable working environment.

2.3 Testing Procedures

Once the engineering requirements were set, testing procedures to quantify their success were established. Presented below are the testing procedures for each engineering requirements.

2.3.1 5-Year Pay off

To ensure that the system will pay off in five years, a series of calculation will be conducted. The proposed energy reduction based on the team's design will be analyzed using; the current electric bills, estimated reduction in electric bill due to the HVAC operating more effectively, money saved by the production of solar energy, and the air quality of the building and the improved environment inside the building. These will all be assessed to see if a five year pay-off is both monetary and in the health and safety it occupants. This decision will be made by the client.

2.3.2 Equivalent Thermal Output

The thermal output of the new system needs to be that of the old system. Using the proposed final design a thermal analysis will be conducted to ensure the temperature of the building is held at a constant 72 °F (equaling the temperature of the previous system). This will be done with the electric bill and IRT temperature measurements inside the building making sure each rooms temperature is the same without increased electricity usage. Additionally, due to the design the team is developing being a ventilation system, the system will be analyzed to see how increased ventilation affects the temperature of the return air of the system. This will be done using methods of finite differencing in MATLAB.

2.3.3 Energy Efficiency

The system needs to increase the energy efficiency of the building. The electric usage of the building will be recorded, and the estimated energy usage of the new system will be analyzed against each other to see if there is a reduction in energy usage. Energy consumption of the new system will be estimated and then compared to that of the current system. Additionally, any adaptations, such as solar arrays, will be analyzed to calculate the energy which is going back to the system. This will be done using a solar PV analysis.

2.3.4 Size

To redesign the HVAC system the new system must not be intrusive to the buildings function. Its current space consumption inside the building needs to be retained or reduced. Final designs will be measured for volume and impact to the buildings occupants. The client will deem a system too big or too intrusive to the building and its occupants.

2.3.5 Easy to Repair and Replace Parts

The ease of repair or replacement to the new system is a qualitative metric but can be expressed in hours to complete tasks of repairing the system. The team will simulate repairs that could potentially be done and record the time taken for each repair. The times will then be presented to the client to be deemed satisfactory.

2.3.6 Temperature Management

Temperatures in the building will need to be controlled in some manner. The team will use IRTs to take temperature measurements of a simulated building and see the response of the temperatures when the system is activated or implemented.

2.3.7 System Run Time

The system needs to have the ability to turn on and off. When the design is created, the team will determine if the system can turn on and off automatically based on the demands of the HVAC system. This will be done by generating a code which uses a series of conditions which are dependent on the variables which control the HVAC and elapsed time of the system. These variables include but are not limited to; the temperatures inside and outside the building, the pressures inside and outside the building, the humidity inside and outside the building, and the current HVAC measurements.

2.3.8 Selective Heating and Cooling

As seen in section 2.3.6 the system will be simulated with being active and or adjusted to see the effects in temperature. Temperature measurements will be taken by IRT to determine if the system can change temperature as desired. Due to the description of this project being changed, the team may not have control over whether selective heating and cooling will be an option.

2.3.9 Display Usage

The system will attach a computer display to the system to track the energy usage of the system and the energy created by the solar panels. This information will be used in other tests to determine the efficiency of the system and system pay off.

2.3.10 Mechanical System

The design must be mechanically designed and bio-inspired. This will be tested by having the approval of the client that it is indeed a bio-inspired mechanical system.

2.3.11 Noise Pollution

Once the design is constructed the system will be ran with a decibel meter to determine the amount of noise produces and then compare the findings to the standards for noise pollution which commercial buildings are to meet.

2.3.12 Solar Simulations

To find the optimal solar design, the System Advisor Model (SAM) will be used to simulate multiple scenarios of the solar panel design. With the SAM software, financial calculations will be made to see the annual energy production, levelized cost of energy (LCOE), net present value (NPV), and the payback period. With these values, it will indicate if the solar panel design is a good idea to implement into the system or not.

2.4 House of Quality

The Quality Functional Display (QFD), is a form of House of Quality and seen in Appendix A figure A.1, whose main job is to show the relationships between the customer requirements and the engineering characteristics by using a 9-3-1 scale, nine being most and one being the lowest significant impact. Each of the customer requirements has a weighted score from 1-5, one being the least important and five being the most important, which are then multiplied by the designated relationship scale. This is to show the overall importance of each engineering requirement. Along with creating these weightings, the QFD compares how the engineering characteristics compare against each other by showing positive and negative impact (-- largest negative impact and ++ largest positive impact). Finally benchmarking takes products on the market and compares them with the customer requirements showing how well they work. The QFD is a useful tool in any design project because it gives the team an idea on what they should and should not do.

3 EXISTING DESIGNS

With a better understanding about the requirements the design must meet, the next step was to research existing designs. This was to provide a way for the team to better understand the components needed for their design, along with understanding what kind of designs are used as HVAC systems.

3.1 Design Research

By improving or redesigning the current HVAC systems in SBS west with modern concepts/ designs, NAU can resolve these costs by reducing annual expenses and their carbon footprint. Before any improvements can be made, research about SOTA designs have been done and conveyed through this section.

3.1.1 Data Furnace

Passive HVAC systems use nature or pre-existing systems to cool and/or heat a building to replace current HVAC systems. A current leading passive system is the Data Furnace [2]. These systems use subsystems to redirect airflow. This allows for the passive system to

displace thermal energy throughout a room or building. Passive systems are known to be environmentally friendly and cost-effective. These systems do not have to generate additional thermal energy; however this system can be unreliable and may struggle keeping a room or building at a consistent temperature.

3.1.2 Utilizing Pre-Existing systems

This design is a unique way to utilize a pre-existing system in a building to provide heating. Most commercial buildings have some sort of data center, which wastes a large amount of thermal energy. Although the exact design is still being designed, the way the design works is by redirecting the heat generated by data centers [2]. This concept has been interpreted in many ways, from single-room heating to building heating [2]. This design will overall reduce the waste of a data center and pre-existing HVAC systems.

3.1.3 Radiative Systems

Radiative system design uses thermal energy generated by the sun. However, a Radiative System explores the uses of the sun further. Additionally, the Radiative system fulfills the functions of an HVAC system.

3.1.4 Beyond Solar Panels

By using the circulation of heated fluid along with additional sub functions and ventilation the Radiative system can heat and cool to a user's specification. This design heats and cools off buildings by using radiative panels (seen in Figure 4), which are panels that collect and amplifies solar energy to heat and pump fluid (e.g. water) throughout the building [3]. The pipes circulate the fluid through the floor, walls, and/ or the ceiling (depending on a customer's need or price range). Moreover, this design has a function, which cools down the fluid in the pipes, cooling both the building and the existing air conditioning (AC) unit [3]. Although this design is efficient and has radiative panels that can allow for lower airflow, this design does not meet the air ventilation and air quality standards [4]. Therefore, it should be accompanied by an all air AC unit. This design will optimize the ACs functionality resulting in an increased efficiency of the unit.

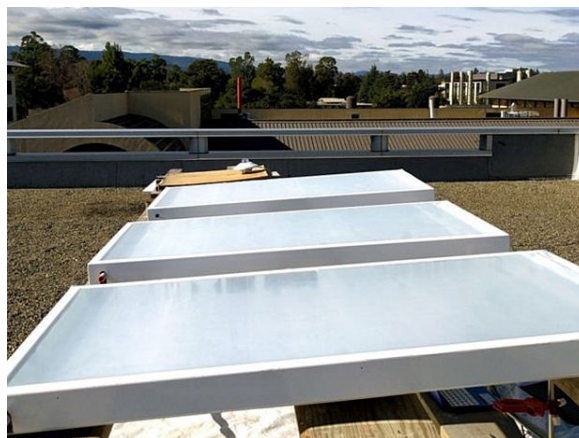


Figure 4: Radiative Panel with Ventilation Example [2]

3.1.5 Breathable Workout Suit

The Massachusetts Institute of Technology has designed a workout suit that allows for ventilation. There are vents on the workout suit that reacts to the temperature and humidity of the human body. Once the user has an increase in body temperature and humidity, the microbio cells in the suit expand and once the temperature and humidity of the user decreases, the microbio cells contract [5].

3.2 System Level

Due to the uniqueness of the project there are not many systems published on the internet similar to ours, but there are systems that correlate to separate functions of the overall system that would not be considered true subsystems. The three systems that will be analyzed are a photovoltaic solar panel, commercial ventilation system, and an active monitoring system.

3.2.1 Photovoltaic Solar Panels

Photovoltaic (PV) solar panels are the most popular form of solar panel on the market. They take solar energy and convert it to electricity using the photons emitted by the sun [6]. To produce a significant amount of solar energy for a commercial sized building an array of PV solar panels is needed. This is typically seen in the form of solar fields. PV panels are being implemented because they would aid in supporting the buildings load during peak hours of electrical use. The array would hopefully supply enough electricity to support the addition of the ventilation system.

3.2.2 Commercial Ventilation Systems

After research into the standard commercial ventilation system, it appears that there are four main parts the make up a commercial ventilation system, the filtration, the conditioning, and the distribution, and the removal of air [7]. In the filtration process air that is being deducted from the outside or the return of stale air from the building is filtered for air quality. Once the air is filtered it is then sent to be heated or cooled depending on the need of the building. Once it had been conditioned to the proper need of the building it is distributed through a series of ducts distributing the fresh air to the rooms of a building. Finally, once the rooms are in need of air circulation or a change in temperature then the old air is vented out of the room and is removed to be either filtered and conditioned or is exhausted form the building to the surroundings [7]. This standard format of ventilation will be used in the designing of the ventilation portion of the final design.

3.2.3 Active Monitoring Systems

Active monitoring systems are energy management systems that's purpose is to reduce the overall energy use of a building. The largest two uses of active monitoring systems can be seen in the monitoring of temperature and lights [8]. In the case of heating and cooling, temperature gauges are placed in various parts of the building constantly checking on the temperature. If one part of the building needs its temperature changed but others do not the system will direct the flow to that part of the building without having to heat or cool other parts of the building that do not need it. This significantly increases the energy efficiency of a building because energy is not waisted heating or cooling pats of the building that do not need it. This can be helpful in the

design of the ventilation system if we can have the power to pick and choose what is heated, cooled, and ventilated then there would be an increase in energy efficiency.

3.3 Functional Decomposition

With a better understanding of the HVAC systems and overarching systems contained within the HVAC, a functional decomposition was done. First the problem was decomposed to allow for a better understanding of what is needed. From there the general function of the system was generated using a Black Box model and was then expanded into a hypothesized Functional model. This is not the actual Functional model because there are functions of the system that can't yet be determined. The models allow for a better understanding of how the system will overall function.

3.3.1 Problem Decomposition

Problem Decomposition is where you decompose a complex problem into smaller solvable problems. There are two main types of Problem Decomposition, Functional and Physical (the Problem Decomposition for the team is represented in Appendix B: Figure B.1). Our complex problem is to design an efficient HVAC System and provided proper ventilation for Northern Arizona University (NAU) SBS West building. This complex problem can be broken down into smaller solvable problems such as provide heating/cooling, protect user and operator, reduce energy consumption and pays off in the long-term. One of the major functions of the proposed system is to reduce energy usage, which means to reduce emissions, reduce electricity and reduce the amount of fuel used for energy production. Providing heat/cooling requires that our system must provide the same services, controlled with ease, ventilated throughout the entire building and is able to maintain the desire temperature. Safety plays a large role in the decision-making process. The proposed system must be able to control the temperature, provide and maintain safe air quality and must be easily accessible. The system must be able to pay itself off within a four-year time span or prove to be cost effective, efficient with energy consumption and continues to save energy and money for NAU in the future.

3.3.2 Black Box model

The black box model is the most basic form of display that shows how system operates. Inside the "black box" is the objective of system. In the case of this project that objective is to ventilate air and increase the energy efficiency of a building. On the left of the box there are the inputs of the system. Included in these are the materials, energy, and signals that the system is being driven off of. In the case of this project the material input is the outside air which will be ventilated to the building. This process will be made possible through solar and electrical energy inputs to help deliver this outside air. This process will be guided by the signal inputs which are the outside conditions such as outside air temperature and humidity. Once the process is completed there will outputs from the system in the same form as the inputs. Clean air and stale air will be outputted as the physical materials. Electric energy will be produced and used as a result of the systems function. Finally, the outgoing signals of the systems will be displayed as new inside conditions for the building. This all can be seen visually in figure 5.

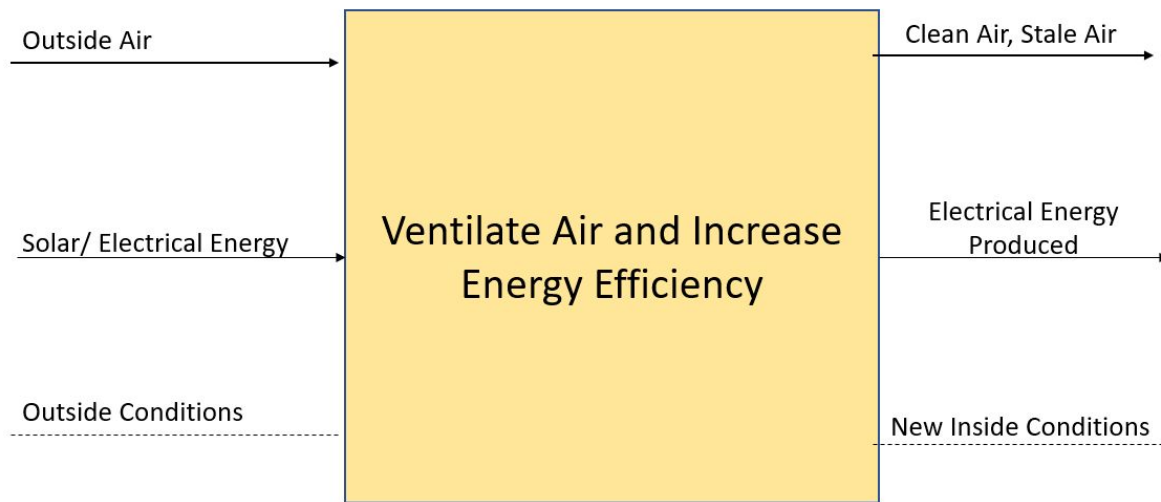


Figure 5: Black Box model of a ventilation system

3.3.3 Hypothesized Functional Model

Once the black box model is completed and the inputs and outputs of the system are classified then the inside can be broken down which is classified as the functional model. In this breakdown the materials, signals, and energy are tracked through a series of subsystems that make up the complete system or process. In the functional model, seen in Appendix B: Figure B.2, we can track the outside air, electrical energy, solar energy, outside temperature, and outside humidity through the system and see how they change into the outputs of stale air, electricity, digital humidity display, and digital temperature display. The clean air is an output of a subsystem but does not physically leave the system. Outside air can be tracked entering the system and then being filtered and conditioned. Once conditioned it is then distributed around the building. The outgoing vents then collect the now stale air and either recondition it or remove it from the building. Electricity is used in the filtering, conditioning, distributing, and venting or removal of this air. Solar energy is collected and then converted into electricity via solar panels and is then integrated into the power grid. The outside temperature and humidity values are collected as signals. Once collected, they are evaluated to direct the system to actuate the ventilation process.

3.4 Subsystem Level

Once the functional model was created three subsystems of ventilation presented themselves as questions. How is the air filtered? How will it be collected? Finally, what is the method to complete this collection. Out of these questions came three subsystems which are: air filtration, Ventilation profiles, and Actuation methods.

3.4.1 Air Filtration

There are three main types of air filtration which our team have decided to consider, and they are fiberglass air filter, polyester and pleated filters, and high efficiency particulate arrestance (HEPA) filters.

3.4.1.a Fiberglass Air Filter

A fiberglass air filter is made of fiberglass material. It is designed with small fibers which restricts dust from going through the filter [9]. There is an adhesive added to the filter to keep the fibers from air ducts. Additionally, it is called a “throw away filter” because they are cheap and have short life cycle. For maximum efficiency manufacturers of these filters highly suggest that the filters should be replaced after 30 days.

3.4.1.b Polyester and Pleated Filters

Polyester and pleated filters are made up from cotton, synthetic, and Polyester [9]. This is similar to the fiberglass air filter; however, polyester and pleated filters have high resistance of airflow and it is more efficient in stopping the dust from going in. Thus, for the maximum efficiency it should be replaced after three months.

3.4.1.c High Efficiency Particulate Arrestance (HEPA) Filters

High Efficiency Particulate Arrestance (HEPA) filters are made up from small fibers that forces the particles to stop from going forward by three ways: interception, impaction, or diffusion [9]. HEPA has the best type to purify the air from the microscopic particles and dust, such as, having the ability to remove the bacteria which its micrometer width is 0.3. Moreover, HEPA filter can prevent up to 99% of the dust that might go in the building.

3.4.2 Vent Style

There are many type of vent style in the market, however, the main three vent styles that our team have focused on are box vent, wind turbines, and ridge vent.

3.4.2.a Box Vent

The box vent, which is also known as low profit vents, is designed for an open hole in the roof to vent the building and it should has higher impact once the box vent is installed as close as possible to the open hole in the roof [10]. Also, the box vent is static vents which implies it has no moving part in the design.

3.4.2.b Wind Turbines

Wind turbines are designed to have circular movement relying only on the wind power. This movement helps the wind turbines to produce cool air to the building and exits the heat from it [10]. Thus, this vent style does not have motors because it is only relying on the wind to move. Moreover, wind turbines are considered as a dynamic vents because it has the top parts moving in a circular way when the wind is in touch with it. Wind turbines are offered in variety of degrees of quality to satisfy different customer needs.

3.4.2.c Ridge Vent

Ridge vent is inspired from an opened book which its face is down to the ground, that means it has a static design with no moving parts [10]. The length of the ridge vent is as the length of the roof in a horizontal way. Ridge vent provides an even distribution of temperature whereas the other vents designs create cold and hot zones in the roof. Most importantly, ridge vents do not rely on the wind, that means the changing in wind direction or speed does not affect the performance of ventilation.

3.4.3 Actuation Methods

There are three main types of vent actuation methods that the team researched or addressed based on their pre-existing knowledge. These were hydraulics, gear trains, and smart materials.

3.4.3.a Hydraulics

Hydraulics are made up of three basic components, the piston, cylinder, and pump. The pump provides pressure to the cylinder creating the piston to extend or contract based on the pressure direction of the pump [11]. The pistons would be attached to the vents and would open and close them as directed from the pump. The accuracy and reliability of the hydraulic design is high, but the cost is all well making it hard to implement.

3.4.3.b Gear Trains

Gear trains in conjunction with a motor is one of the more popular forms of increasing or decreasing the surface area of a vent. A electric motor would be attached to a gear train that would open and close vents in a torsional manner. The gear train is designed to each vent applications based on the size of vent its opening and the angular velocities on each end of the train. Different motors would be selected based on the torque and speed and would be controlled on a voltage input. The gear train would then transfer that torque and speed to vent which would open and close it. This system like the hydraulics is very accurate in providing the right ventilation area and is simpler than the hydraulics which needs hydraulic fluid. The cost to operate and implement is less than that of the hydrologic making it more feasible for the application at hand.

3.4.3.c Smart Materials

The final mode of actuation would be through a smart material. There are some materials for sale that expand in warm temperatures and contract when experiencing cold temperatures. Implementing this into a ventilation setting is not a new concept but is one that is not being readily used currently. Further research into the exact material will be done to determine what will fill the need of the application. If chosen for the final design then more research would be done as well to determine if using the material by itself is sufficient to provide the proper amount of ventilation or if another method in conjunction with the smart material. The largest upside to using the smart material route for this project is that it will fulfill the bio inspired requirement that is present.

4 DESIGNS CONSIDERED

With a better understanding of the different subsystems and systems, various ventilation designs were generated. First, each member of the team was to generate designs for the subsystems. The team then narrowed down, using methods mentioned in figure C.1 in appendix C, the designs done independently to 16 complete subsystem designs. The designs were then categorized and used to create four complete system designs. This was done using a Morph matrix.

4.1 Design Category #1: Smart Material Actuation

This design utilizes a smart material which expands when its temperature increases and contracts when its temperature decreases. The design uses layering of a smart material and a material not dependent on temperature to allow for the desired expansion to be calculated. Figure 6 below is a subsystem design drawn up by a member of the team.

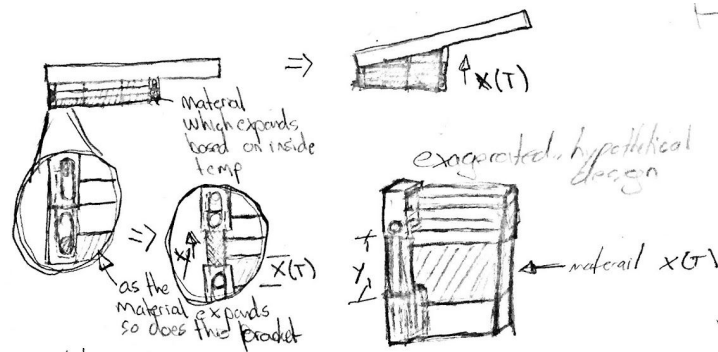


Figure 6: Actuation Using Thermal Smart Material

Figure 7 below, is a design developed by a member of the team which is similar to the previously subsystem design which used a smart material to actuate the vent. However, this design also uses a hydraulic arm to assist with actuation because it was assumed that the smart material itself would not be enough to lift the panel. This design's hydraulic design would not only be actuated by a hydraulic arm, but the hydraulic arm was proposed to actuate using a function of the smart material's expansion.

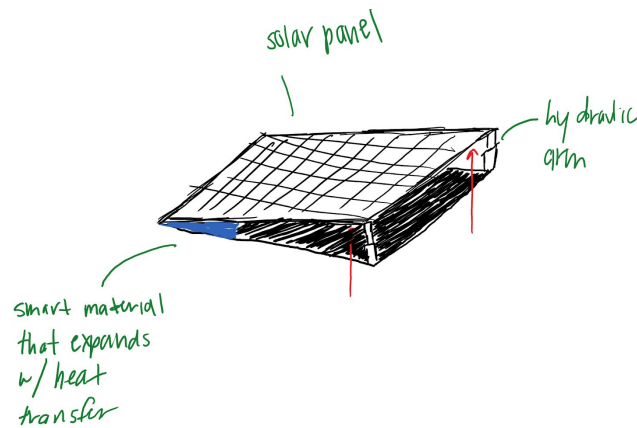


Figure 7: Panel Actuated by a Smart Material and Hydraulic Arm

4.2 Design Category #2: Vent Specification

Figure 8 below depicts two concepts for vents which are subsystems of the complete ventilation system. Number one uses vents on top of the panel and would be actuated by motors depending on the temperature and humidity of the inside and outside air. Number two is a design in which would be actuated by any sort of arm that would lift the panel from the building. Additionally, the design utilizes a net which would filter the outside air and any sort of debris like the way fish gills work.

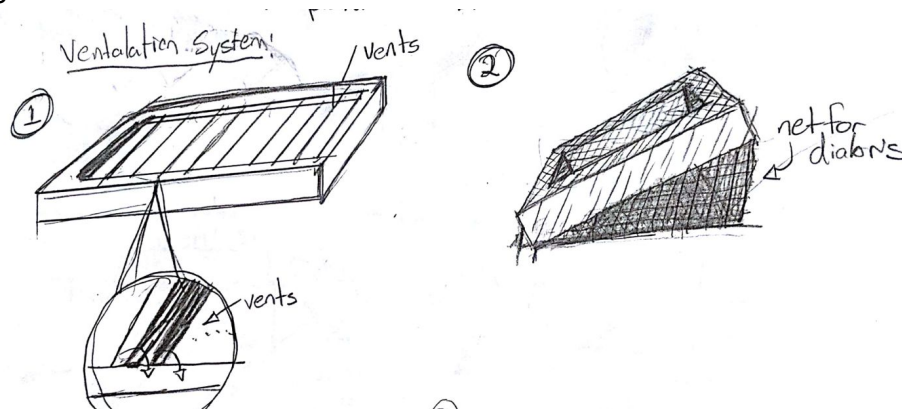


Figure 8: Sample of Vent Design

4.3 Design Category #3: Bio-Inspired Designs

In figure 9 below, is a design for vents for the ventilation system were designed by a member of the team. They based their design on how flowers will rotate open or rotate closed based on the humidity and temperature of the ambient air. This design is bio-inspired and allows for the ventilation of the building to be controlled by an active monitoring system, which would analyze the humidity and temperature of the air inside and outside the building. This design would then (theoretically) adjust its diameter to meet the desired ventilation

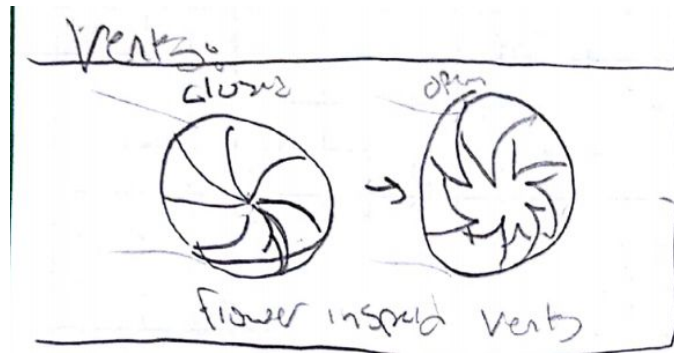


Figure 9: Vents Based on Flowers

In figure 10 below, the design depicted utilizes whale fins as blades for the fan for the ventilation system. This design was developed by a member of the team who used their knowledge about bio-inspired design and recalled that similar designs have modeled their designs after whale fins. Whale fins are known to be efficient when moving through a fluid and was hypothesized to be a way to effectively displace the air in or out of the building.



Figure 10: Fan Based on Whale Fins

4.4 Morphological Matrix Generation and Analysis

In Appendix C, figure C.1, is the Morph Matrix which was generated to provide a platform for the team to come up with complete system designs. The team choose four main subsystems to focus on, then four designs were chosen from those the team developed individually, for each subsystem. The four categories were as follows; vents, actuation, implementation, and Air economizer and/or filter. An air economizer can dampen (soften) the air, as well as filter, to meet the ventilation codes for commercial buildings. With these four complete systems, a list of their advantages and disadvantages are listed in figure C.6 in appendix C.

These concepts were either combinations or iterations of the team's original independent designs. These designs were then reformatted, for ease of comprehension. Additionally, once

the morph matrix was developed the team choose subsystem designs or a combination of subsystem designs from each category to generate complete system designs. The team decided that they would be more focus on the designing of the subsystems and would only generate four final designs. This was due to the amount of systems which had to go into the ventilation system to meet the customer's requirements. Moreover, using a Morph Matrix allows for the team to easy replace a main component of the system by referring to a category of the matrix. One last thing to take into consideration, is that all the ventilation systems designed are assumed to have temperature and humidity sensors for inside and outside air which will be used to calculate the appropriate actuation needed for ventilation. Along with the sensors, each design will have a solar panel.

Design one seen in Appendix C: Figure C.2, is the first complete system design the team developed. This design utilizes the first design for vents, first design for actuation, third design for instillation, and fourth design for economizer and/or ventilation from the Morph Matrix. This design uses a panel vent which would change its angle of attack by use of a motor and actuator arm. This would then increase or decrease the surface area of which air is being taken in or expelled. If outside air is being taken in, it will then mix the outside and inside air before going through a single economizer to damp and filter the air mixture. The air is drawn using fans and will then be distributed to either the HVAC system or the building. Additionally, the design system uses a dome to direct the solar radiation from the sun to the solar panel. This is hypothesized to increase the amount of energy the solar panel will produce.

In Appendix C: Figure C.3, is the second design the team generated using the Morph Matrix. This design uses the second design for vents, the third design for actuation, the first design for implementation, and the first design for economizer and/ or filter. The design utilizes dampers and economizers placed on the perimeter of the panel and is actuated by a hydraulic arm. Like the first design developed, this design will actuate, increasing the intake of outside air based of the temperature and humidity of the air both inside and outside. This air is then directed by use of a fan to the mix with the inside air. The inside air will have gone through a damper and filter before mixing with the ambient air. Finally, utilizing fans the mixed air is then directed to the HVAC system or the building.

The third design can be seen in Appendix C: Figure C.4. This design utilizes the third design for vents, second design for actuation, fourth design for implementation, and second design for economizer and/or filter. The design has the panel sitting flush with the roof of the building and is actuated using a gear train. The gear train moves along a slotted portion to lift the panel up and it is then slid along the top of the roof providing ventilation. Depending on the desired ventilation, based on outside and inside humidity and temperature, dictates the amount in which the panel will be displaced. The outside air is then forced through an economizer using a fan which will then mix with the inside air. In this design the mixed air is free to move in the open space below the roof. This air would then be sucked out near the walls of the open area to be directed into the HVAC or into the building.

In Appendix C: Figure C.5 depicts the last design developed using the Morph Matrix. This design is a combination of subsystem designs. The design utilizes both the first and second design for the vents, both the first and forth design for the actuation, the first design for implementation, and the first design for the economizer and/or filter. This design is offset on the roof and contains vents on the side. These vents are actuated by using a smart material which

expands, and contracts based on temperature and/or humidity. If more ventilation is needed, in addition to the vents actuated by the smart material. The panel itself will be raised to provide a larger surface area for the outside air to be taken in. This outside air is then directed through a fan which displaces the air through a damper and filter. This filtered outside air is then mixed with filtered inside air which is then disturbed to the HVAC system or the building. Additionally, the use of an hydraulic actuator rather than arms controlled by motors was discussed as alternative actuation. This design is similar to the second complete system design the team generated. However, this design combines aspects and uses ventilation on the sides rather than dampers.

These complete subsystem designs and complete system designs were analyzed using rationale design selection techniques. The selection process used is discussed in the next section “Design Selected” and “Rationale for Design Selection”.

5 DESIGN SELECTED

The design which was originally selected was the fourth design generated using the Morph Matrix, Appendix C: Figure C.1. The design was selected using a rational selection process which compared the subsystem and system designs generated by the team to customer needs. This was done to ensure the selected design meets the requirements given by the client. The design was then redesigned to fit the building implementation and to account for the analytical analysis completed by the team.

5.1 Rationale for Design Selection

Based on the multiple designs that were generated, a final design had to be chosen. This was done by using a decision matrix. A decision matrix takes the customer needs and gives a score of the design based on the customer needs. The weight is a percentage that is based on the importance of the customer needs. The higher the weight is, the more important the customer need is. In figures 15 and 16 the two highest weights given to the customer needs is that the design must be bio-inspired, and the design must increase the overall energy efficiency of the building. These two customer needs both have a weight of 0.25. The next two highest weights of the customer needs are that the system must have a short payoff and that the system must be safe. The rest of the customer needs all have the lowest weight of 0.05, which indicates that they are not as important as the other customer needs. After the weight of the customer needs is indicated, the design gets scored based on how well it correlates to the customer needs. The score is based on a scale of 0-100 with 100 having the most correlation. Lastly, the weighted score is the weight multiplied by the score the design received. The weighted score is then summed up to give a total score for the design. Based on figures D.1 (in Appendix D) and 9, CONCEPT 12 had the highest score of 186.25 and CONCEPT 6 had the lowest score of 151.25.

Customer Needs	Weight (%)	Score	Weighted Score
Must be bio-inspired	0.25	100	25
Must increase energy efficiency	0.25	90	22.5
Must have a short pay-off	0.12	65	16.25
Must provide the same services as current system	0.05	70	17.5
Must be easy to maintain	0.08	75	18.75
Must be space efficient	0.05	85	21.25
Must not generate excess noise pollution	0.05	85	21.25
Must have adjustable times	0.05	90	22.5
Must be safe	0.1	85	21.25
Total	1	745	186.25

Figure 11: Decision Matrix for Concept 9

Based on the decision matrix, since concept 9 scored the highest, it became the final design. This design includes an elevated solar panel that is attached to the roof of a building. The solar panel is placed in a metal case where vents are installed on the sides. These vents can be actuated by a smart material that expands when the outside temperature increases and contracts when the temperature decreases. The solar panel and metal case can also be actuated by a motorized arm that is controlled by the temperature of the outside. Once vents and/or panel is open, the building will have a fan and dampers that can help bring the outside air into the building while filtering that air. After the air gets filtered, the air gets mixed with the inside air and gets distributed throughout the building through fans. This can be seen in Appendix C: Figure C.5.

The final design scored a total of 100 points for being bio-inspired. The bio-inspired components in the design are the vents. The vents are inspired by how a pine cone can open and close its shape depending on the temperature and humidity. If the temperature and humidity increases, then the pine cone will open [12]. However, when the temperature and humidity decreases, then the pine cone will close its shape. The other bio-inspired components are the smart material. The smart material can actuate based on the outside temperature like the pine cone. The team scored the design a 90 for increasing the energy efficiency of the building. This is because the vents will allow for cooling of the building and the solar panels will generate energy for the fans to distribute the filtered air entering the building throughout the building. However, the customer need for having a short payoff was scored the lowest. This customer need scored a 65 because there are no proper calculations of how much energy the solar panels will generate and how much money it can save. A score of 90 was given to the customer need of having adjustable times because the design will provide ventilation depending on the temperature of the building and the demands of ventilation. If the building reaches a certain temperature, then the vents will start to actuate. Once the building reaches a lower temperature, then some vents will close to bring the temperature of the building back up to a specified temperature. A score of 85 was given to the customer needs of not generating excess noise pollution because the system will not make much noise when vents are open but will produce some noise when the motors of the

panel are actuating the panel. Summing all the weighted scores from all customer requirements gave the design a total score of 186.25, which was the highest score out of all designs.

Once the design was chosen, a structural and ventilation analysis was performed. Based on these findings along with the insight provided from a physical walkthrough of the building, the selected design was redesigned for better implementation of the system. All the main criteria were kept, but the physical geometry of the structure was changed.

5.2 Design Description

The final design being presented is a rooftop ventilation housing that will be placed on the main ridge of SBS West. Its function is to replace the current venting intake and exhaust/ relief system that is currently designed into the ridge of the roof. Effectively the housing would sit on the ridgeline of the roof where it would be ducted down to the current relief and intake air ducts underneath the ridgeline, this can be seen below in figure 12. One housing unit will be ducted to three current ducts, these current ducts can be seen in figure 13 below. The proposed idea is the set up 14 new units (42 ducts in SBS main ridge) that would replace the function of venting air to the building.

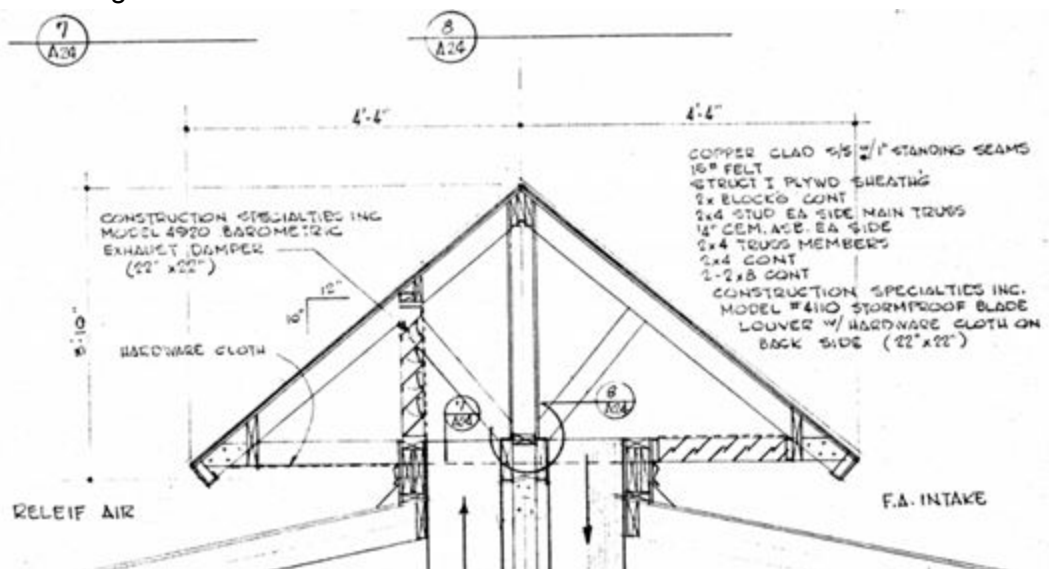


Figure 12: Blueprints of the Air intake and Exhaust on the ridge of SBS West

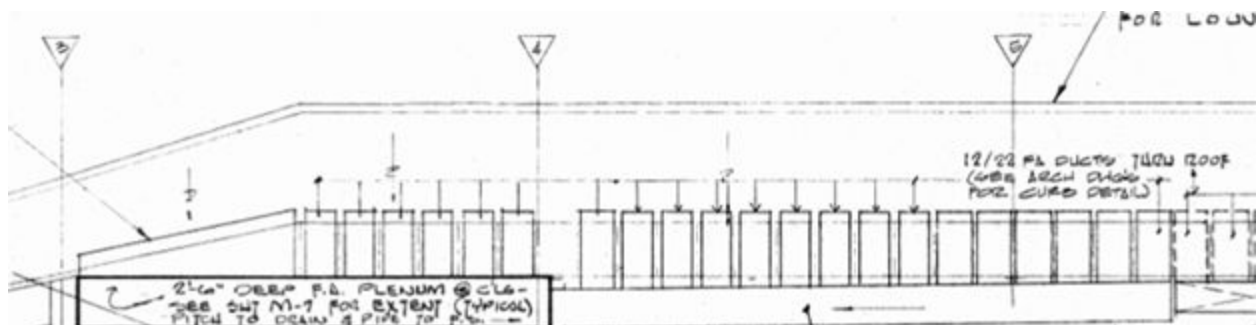


Figure 13: Blueprints of a Section of the roof displaying a side view of the ducting of the Intake/Exhaust.

The proposed design can be seen in a isometric views in Figure E1,E2, in Appendix E. Each unit is designed with two 5ft x 3ft solar panels oriented next to one another at the roof of the vent facing the south side of the building. Each panel is rated at 330 kWh. The intake vent is located on the south side and exhaust venting is on the north side of the ridge as seen in figure 12. The vents are located on the north and south faces of the housing underneath roof structures to prevent any snow or weather to come into the ventilation ducting. The vents will be actuated using a smart material which for now is proposed to be nitinol. Each housing structure will be built out of square steel tubing and sheeting to cover the frame. This structure was designed to handle the weight of 6ft of snow due to flagstaff receiving storms that have produce up to 8ft of snowfall [13]. The structural analysis of the housing can be seen in Figure E3. The design was governed by the four main factors; solar panel size, current ducting placement, roof-ridge geometry, and venting area. The two solar panels need to be supported and facing south at approximately a 30-degree angle off horizontal. The vent area of the housing needed to be the same as that of three ducts. Finally, the overall length of the housing need to cover that of three ducts. By placing the solar panels side by side creating a length of 6 ft, the housing will include three current ducts in its footprint. The vent area is required to vent three ducts was calculated to be 5.5ft² or 14in X 60 in. The base of the housing needs to sit flush on the roof of the building so the base was designed to match the pitch of the ridge. Up to this point only the ventilation structure and geometry has been completed. Drawing detailing the exact dimensions of the housing can be seen in figure E4. In the future, more specifications on actuating the vents with a smart material will be analyzed and implemented into the current design.

6 PROPOSED DESIGN

Due to the lack of funding for the project at this time is unsure whether the full-scale prototype will be built or not. If funding is acquired for this project, a concept model of the system will be refined and cleared by the client for fabrication. At first one prototype would be constructed. Solar panels attached, and actuation methods would then be solidified and implemented. The housing is to be constructed out of a steel tubing frame and then covered by sheet metal creating the housing. The south facing roof is to be constructed of two 5ftx3ft solar panels side by side. The north facing roof is to be constructed out of a steel tubing frame and covered with sheet metal as well. The vents themselves are to be created out of steel sheeting. The actuation of the vents will be controlled by a air temperature sensitive spring made out of Nitinol. The To accomplish this the materials that would be used for one housing unit can be seen in Appendix F, Table F1. If funding is acquired, then the schedule that will be followed for next semester can be seen in figure 14 below as the top half of the schedule.

TASK NAME	START DATE	END DATE	DURATION (WORK DAYS)	TEAM MEMBER	PERCENT COMPLETE	MONTH 1				MONTH 2				MONTH 3				MONTH 4				MONTH 5			
						W1	W2	W3	W4	W1	W2	W3	W4	W1	W2	W3	W4	W1	W2	W3	W4	W1	W2	W3	W4
Second Semester With Budget																									
Finalize Bill of Materials with Client and Sponsors	1/15	1/25	10	All	0%																				
Order/ Buy Materials	1/25	1/31	6	All	0%																				
Fabrication of Prototype	2/1	2/26	25	All	0%																				
Finalize Website	2/26	3/30	34	All	0%																				
Test of Prototype	2/26	3/15	19	All	0%																				
Iterate Prototype (If Needed)	3/15	5/1	46	All	0%																				
Second Semester Without Budget																									
Review Current Design	1/15	1/25	10	All	0%																				
Walk Through SBS for Implementation	1/25	2/15	20	All	0%																				
Redesign with New Information and Criteria	2/15	2/20	5	All	0%																				
Iterate Process	2/20	5/15	85	All	0%																				

Figure 14: Two schedules for next semester, top is with funding, bottom is without funding.

If funding is not acquired, this project turns into a analytical approach. This would then change the scope of work for the team. The teams focus would then be aimed at in-depth research on how to complete SBS West's ventilation redesign with a bio-inspired design. Research into actuation of ventilation as well as smart materials that could be used for the actuation will be conducted. From here ideas would be iterated upon multiple times, as time allows, until the solution is converged upon by the team. A proposal and action plan will then be created to present to the client and university as a template for them to use as the university works towards updating its campus and increasing its energy efficiency. The analytical approach would lend itself to having more time for walkthroughs in which the team could quantify more issues with the current system and understand how an adaptive system would integrate on to the current system. The schedule for this route is less understood at this point with no clear deadlines set besides class assignments and the final presentation of the team's work.

7 CONCLUSION AND FUTURE WORK

The work that has been done was to finalize a design that would bring SBS West, at NAU, to the proper ventilation codes while providing energy efficiency. Additionally, this design incorporates aspect which were inspired by nature.

The team has a better understanding of what is needed from their design, pre-existing designs which meet some of the required aspects, and the function of the system being developed. With these insights the team was able to generate concepts which satisfied the need for a subsystem and/or system as a whole. Subsystem designs were then selected to develop complete designs. These complete designs were then analyzed to generate a final design.

With a final design generated, the team confirmed with the client that they can move forward with the proposed design if funding is available. After confirming the design, the team was able to complete a series of analyses. These analyses were split among the team members with Taylor focusing on ventilation, Talon focusing on structural and actuation analysis, Hani focusing on heat exchangers, and Kyle focusing on solar analysis. With these analyses completed the final design was then refined to the presented design in this document. As the team waits to hear about funding, the direct path of this project is unclear, but plans were created to accommodate either outcome. This project will continue in the spring of 2019. The team will either focus on creating a prototype of the current design and test it or will focus on an action plan and higher level proposal to overhaul the HVAC system in SBS West. Finally, the findings will be presented at the Undergraduate Symposium where the team will give a presentation on the outcome of the project and a idea on how to increase NAU's campus through a bio-inspired design in May 2019.

REFERENCES

- [1] Garlick, M. (2018). Retro-Commissioning Findings Report Social and Behavioral Science West Building. [ebook] Available at:
[http://file:///C:/Users/kmats/Downloads/SBS%20West%20Recommissioning%20Study%20Findings%20Report_Revised%20\(1\).pdf](http://file:///C:/Users/kmats/Downloads/SBS%20West%20Recommissioning%20Study%20Findings%20Report_Revised%20(1).pdf) [Accessed 30 Nov. 2018].
- [2] E. Ackerman, "Heat Your House with Someone Else's Computers", *IEEE Spectrum: Technology, Engineering, and Science News*, 2014. [Online]. Available:
<https://spectrum.ieee.org/energywise/energy/the-smarter-grid/heat-your-house-with-someoneelses-computers>. [Accessed: 13- Feb- 2018].
- [3] P. Patel, "Efficient Air-Conditioning Beams Heat Into Space", *IEEE Spectrum*, 2017.
- [4] Babiak, J., Olesen, B. W., & Petráš, D. (2009). *Low temperature heating and high temperature cooling. Brussels: REHVA - Federation of European Heating, Ventilation and Air Conditioning*
- [5] J. Kinnear, "What's Better, Solar Thermal or Solar PV? | Solar Power Authority", *Solar Power Authority*, 2018. [Online].
- [6] Office, J. (2018). *Researchers design moisture-responsive workout suit*. [online] MIT News. Available at: <http://news.mit.edu/2017/moisture-responsive-workout-suit-0519> [Accessed 26 Oct. 2018].
- [7] "Commercial Ventilation | The Building Codes Assistance Project", Bcapcodes.org, 2018. [Online]. Available: <https://bcapcodes.org/tools/code-builder/commercial/ventilation/>. [Accessed: 26- Oct- 2018].
- [8] A. Blumenfeld, Cdn.ymaws.com, 2014. [Online]. Available:
https://cdn.ymaws.com/www.nibs.org/resource/resmgr/Conference2014/BI20140109_BE-TEC_Thumm_Blume.pdf. [Accessed: 26- Oct- 2018].
- [9] Facilitiesnet. (2018). *The Three Types of Air Filters - Facilities Management Insights*. [online] Available at
[:https://www.facilitiesnet.com/iaq/article/The-Three-Types-of-Air-Filters-Facility-Management-IAQ-Feature--11235](https://www.facilitiesnet.com/iaq/article/The-Three-Types-of-Air-Filters-Facility-Management-IAQ-Feature--11235)
- [10] Sparrow Exteriors. (2018). What Types and Styles of Roof Vents Are There? - Sparrow Exteriors. [online] Available at:
<https://sparrowexteriors.com/2013/08/16/what-types-and-styles-of-roof-vents-are-there/> [Accessed 26 Oct. 2018].
- [11] C. Woodford, "How hydraulics works | Science of hydraulics," *Explain that Stuff*, 26-Apr-2019. [Online]. Available: <https://www.explainthatstuff.com/hydraulics.html>. [Accessed: 26-Oct-2018].

[12] Vanstone, E. (2018). *Pine cone Weather Station*. [online] Science Sparks. Available at: <https://www.science-sparks.com/pine-cone-weather-station/> [Accessed 26 Oct. 2018].
<https://www.facilitiesnet.com/iaq/article/The-Three-Types-of-Air-Filters--11235> [Accessed 26 Oct. 2018].

[13] B. Bruner, "Flagstaff's Storm of the Century remembered 50 years later," *Arizona Daily Sun*, 13-Dec-2017. [Online]. Available: https://azdailysun.com/opinion/columnists/flagstaff-s-storm-of-the-century-remembered-years-later/article_725a8071-7688-57d4-b15d-86381fa3e3db.html. [Accessed: 05-Nov-2018].

APPENDIX A

System QFD		Date: 02/14/2018									
		Input area are in yellow									
1	4 Year Pay Off										
2	New - Old Thermal Output										
3	Energy Efficient	++									
4	Building Compatible/ Space Efficient	+	-								
5	Ease in Repair and System Check	++	+	+							
6	Temperature Management	+	+	++	+						
7	Selective Heating/ Cooling	++	-	++	-	--	++				
8	Display Usage (Energy, Hours, etc.)			++	-	++	++	+			
9	Mechanical System			-	+	+	-	+	-		
10	Noise Pollution					+			-		

APPENDIX B

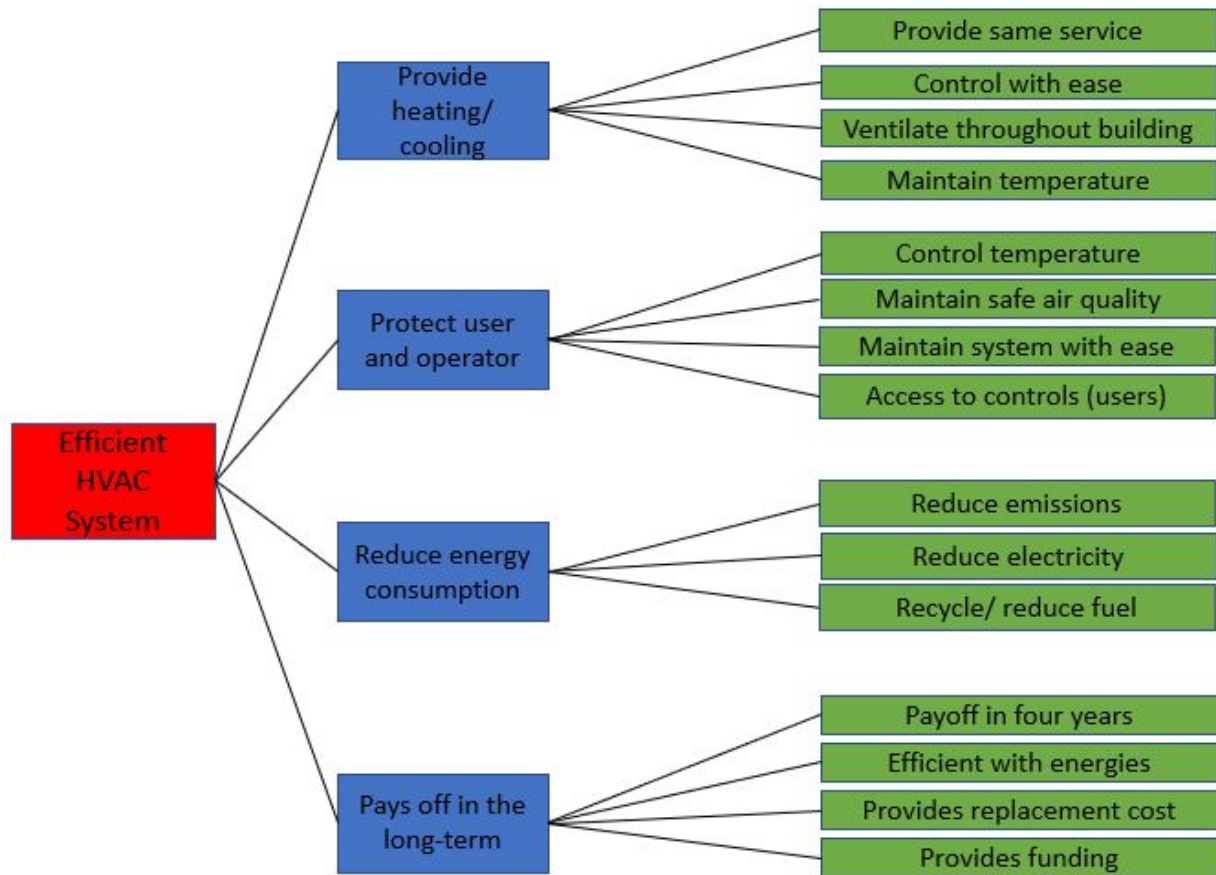


Figure B.1: Problem Decomposition

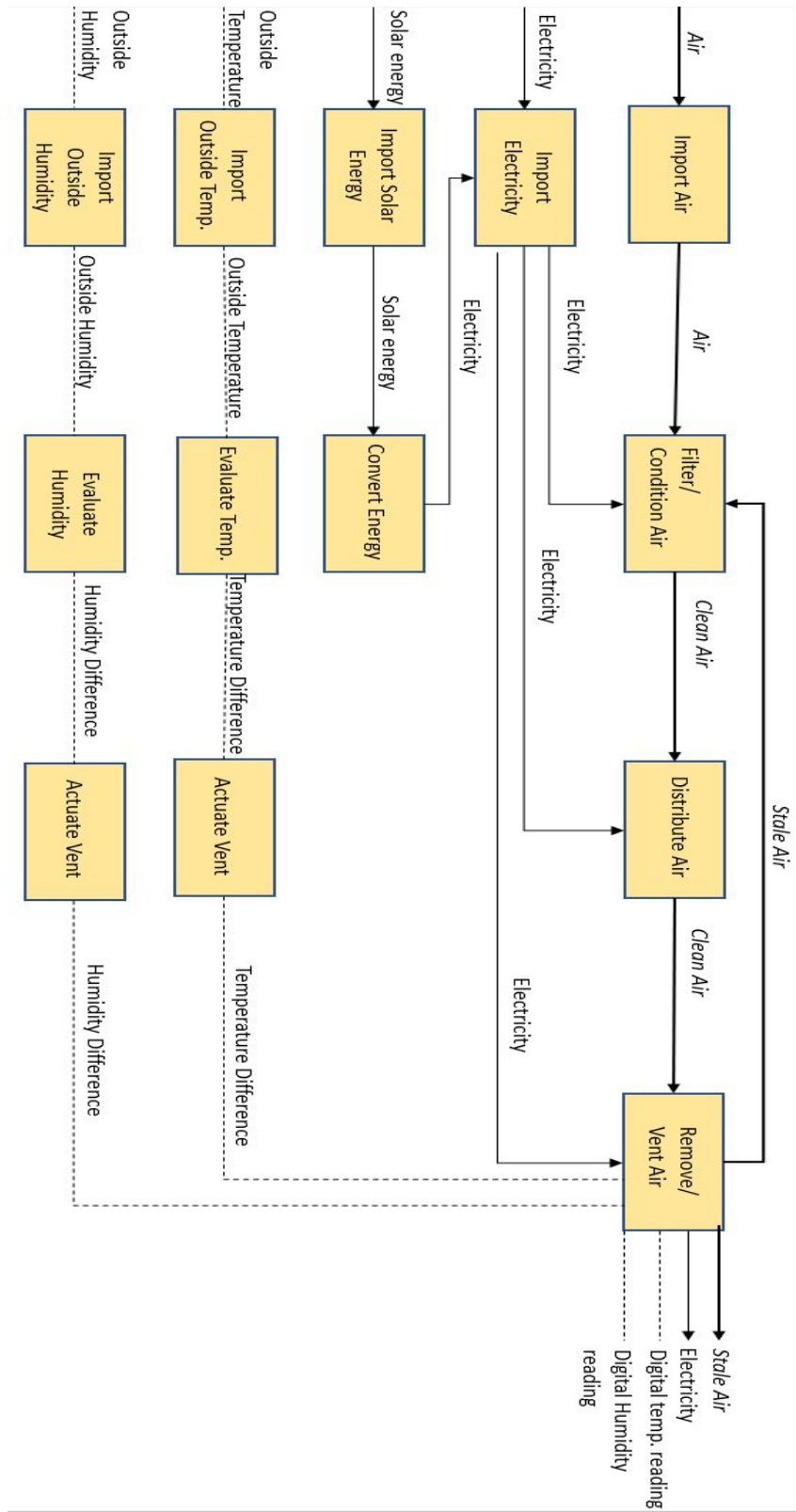


Figure B.2: Hypothesized Functional Model of a Ventilation System

APPENDIX C

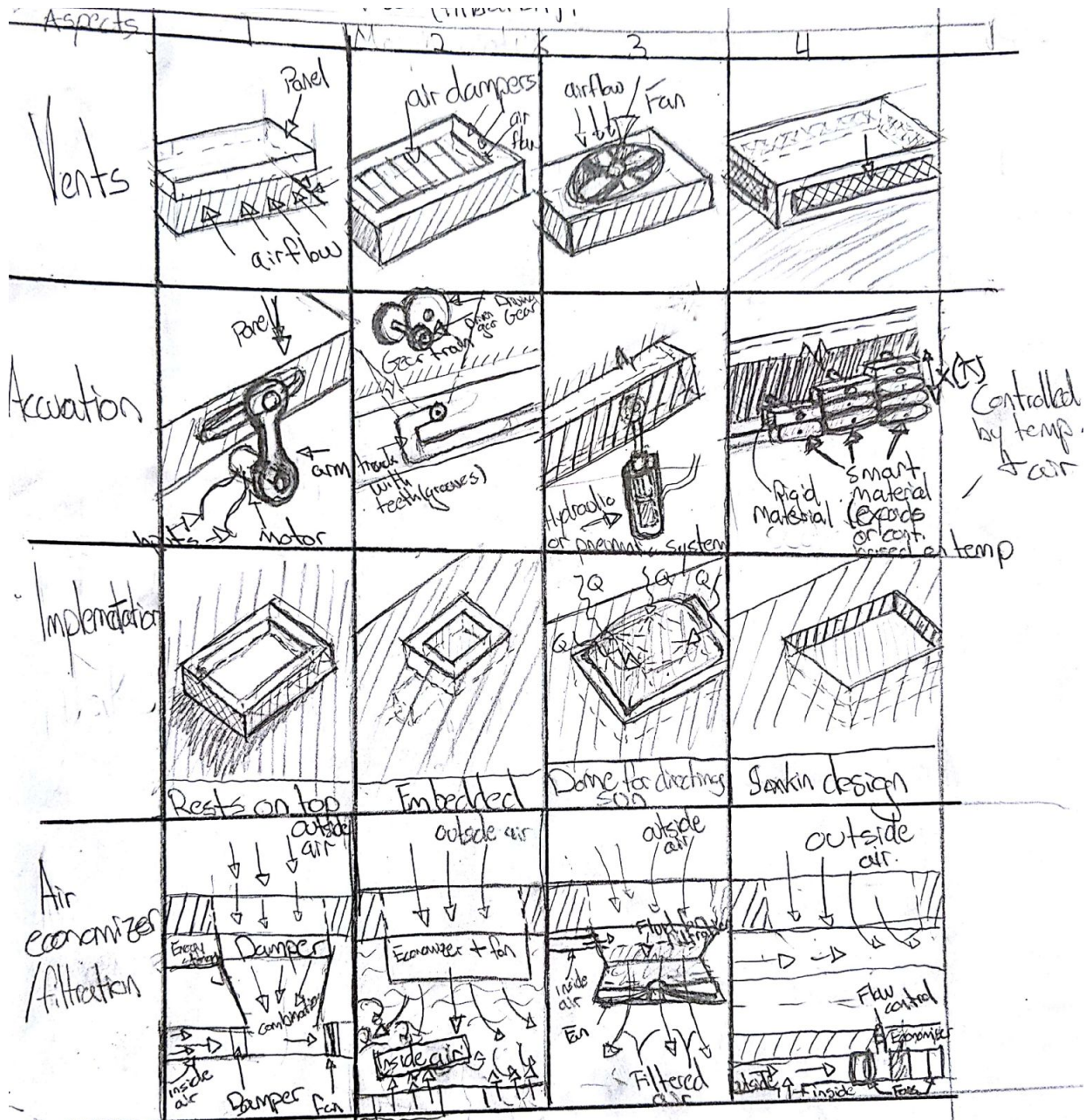


Figure C.1: Morph Matrix of Subsystems

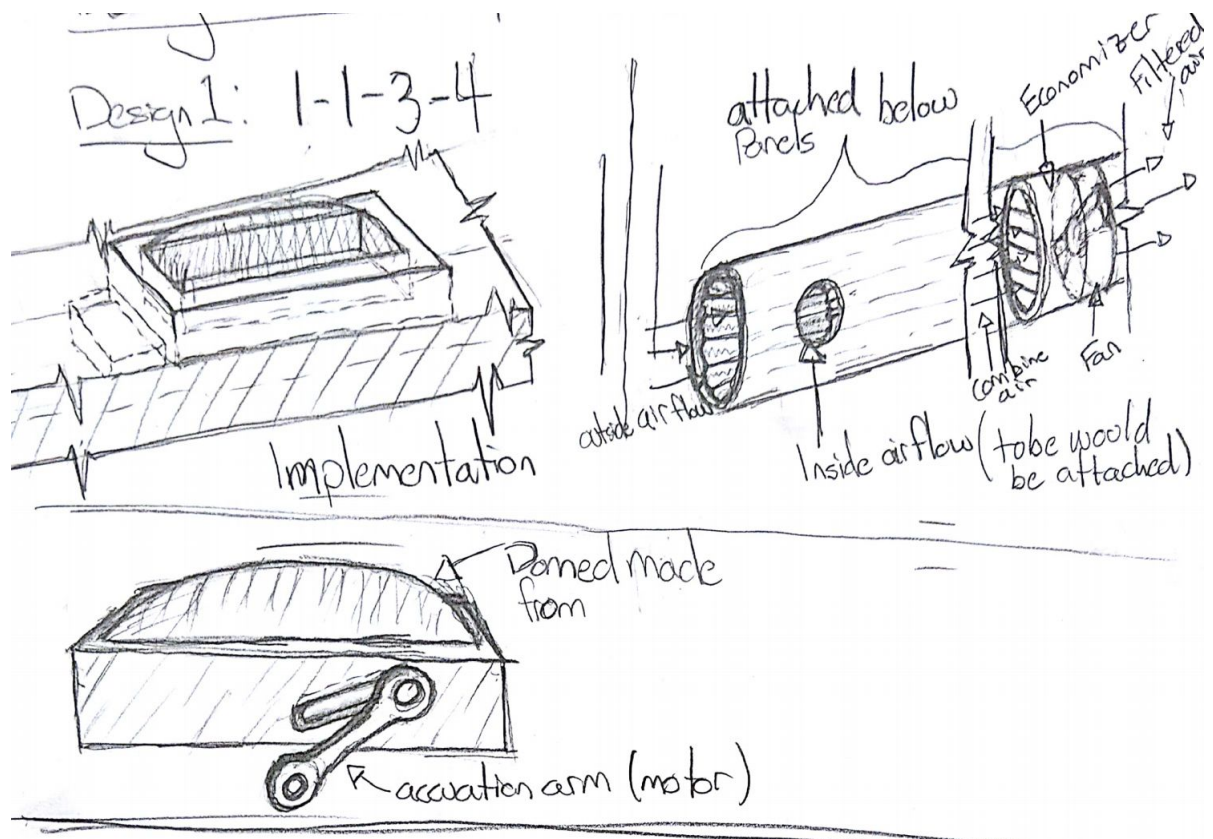


Figure C.2: Design One Generated via Morph Matrix

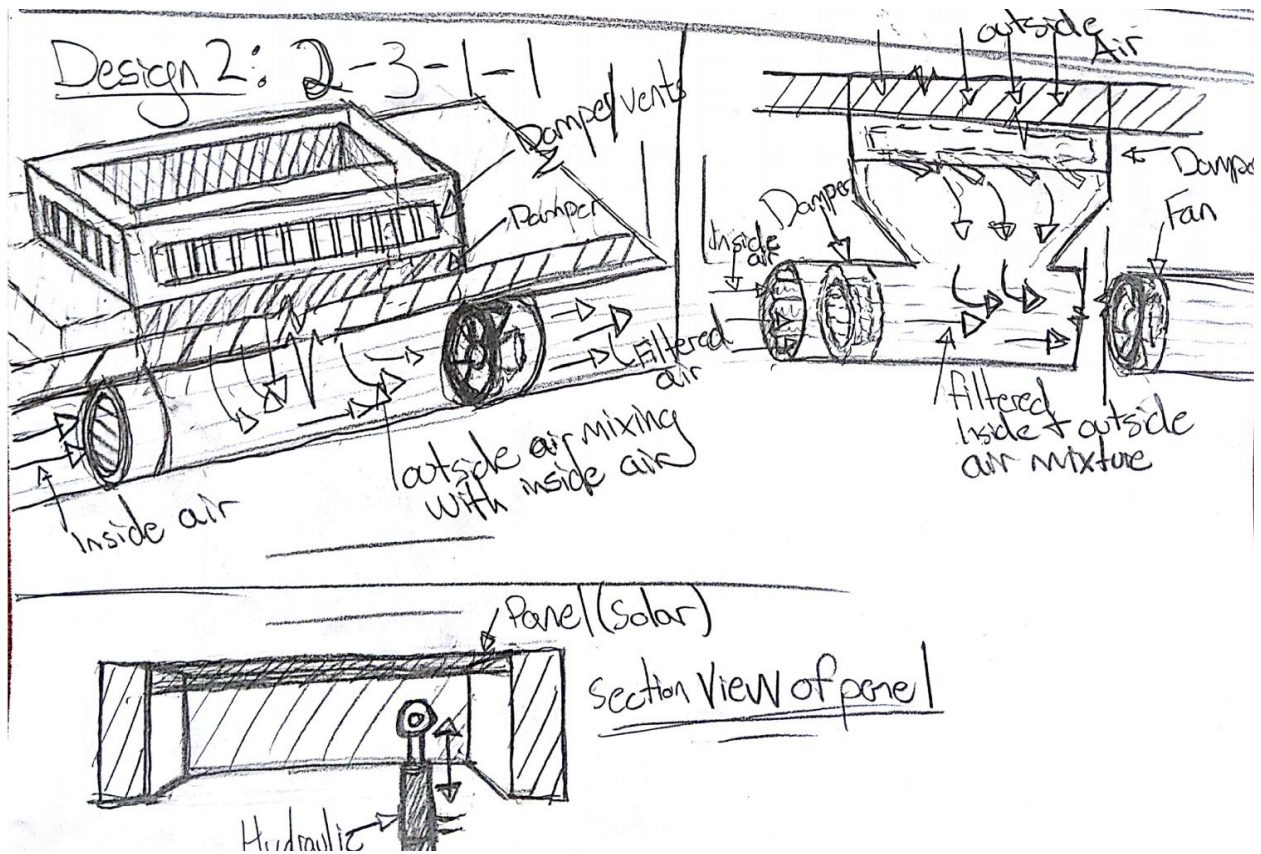


Figure C.3: Design Two Generated via Morph Matrix

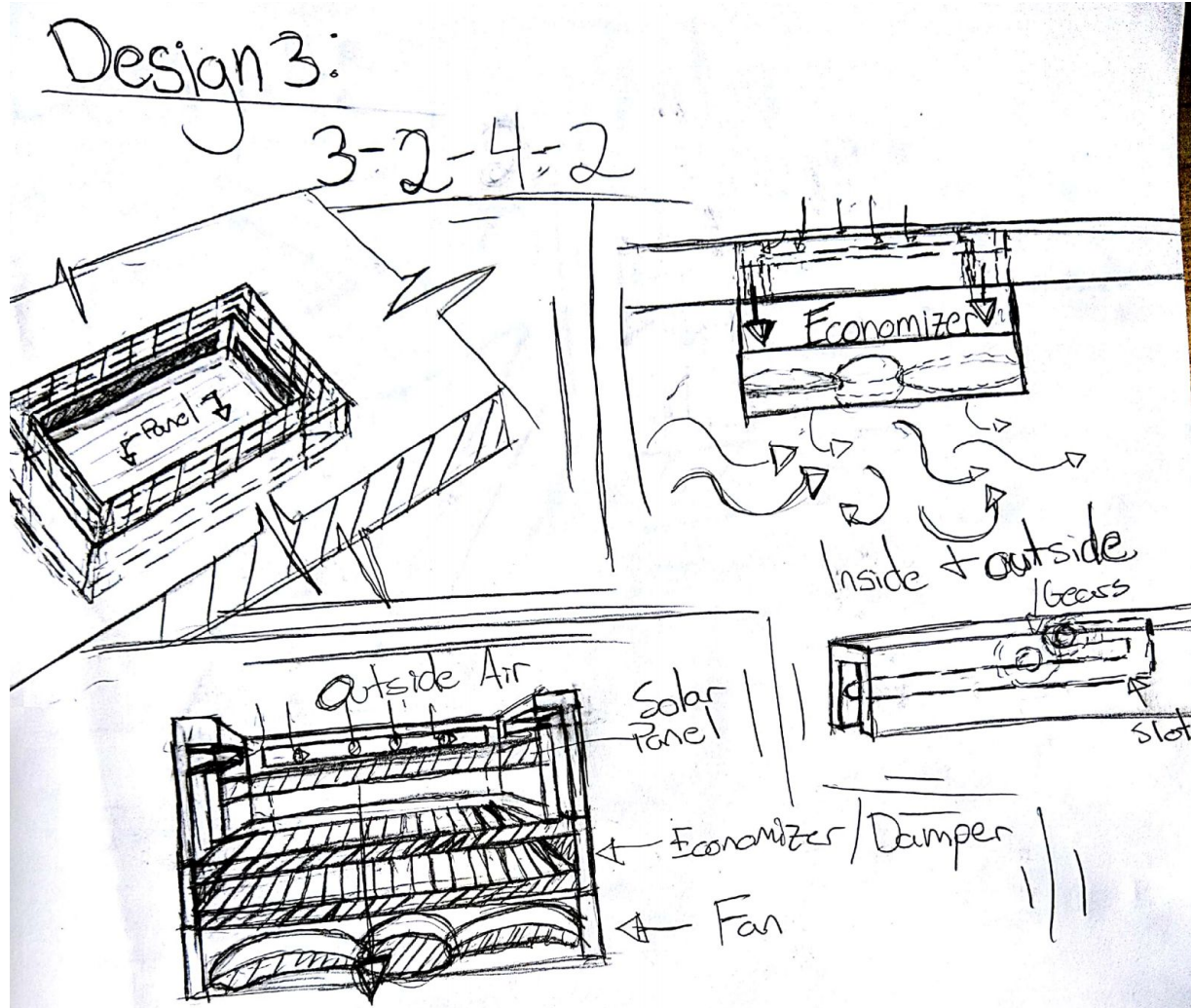


Figure C.4: Design Three Generated via Morph Matrix

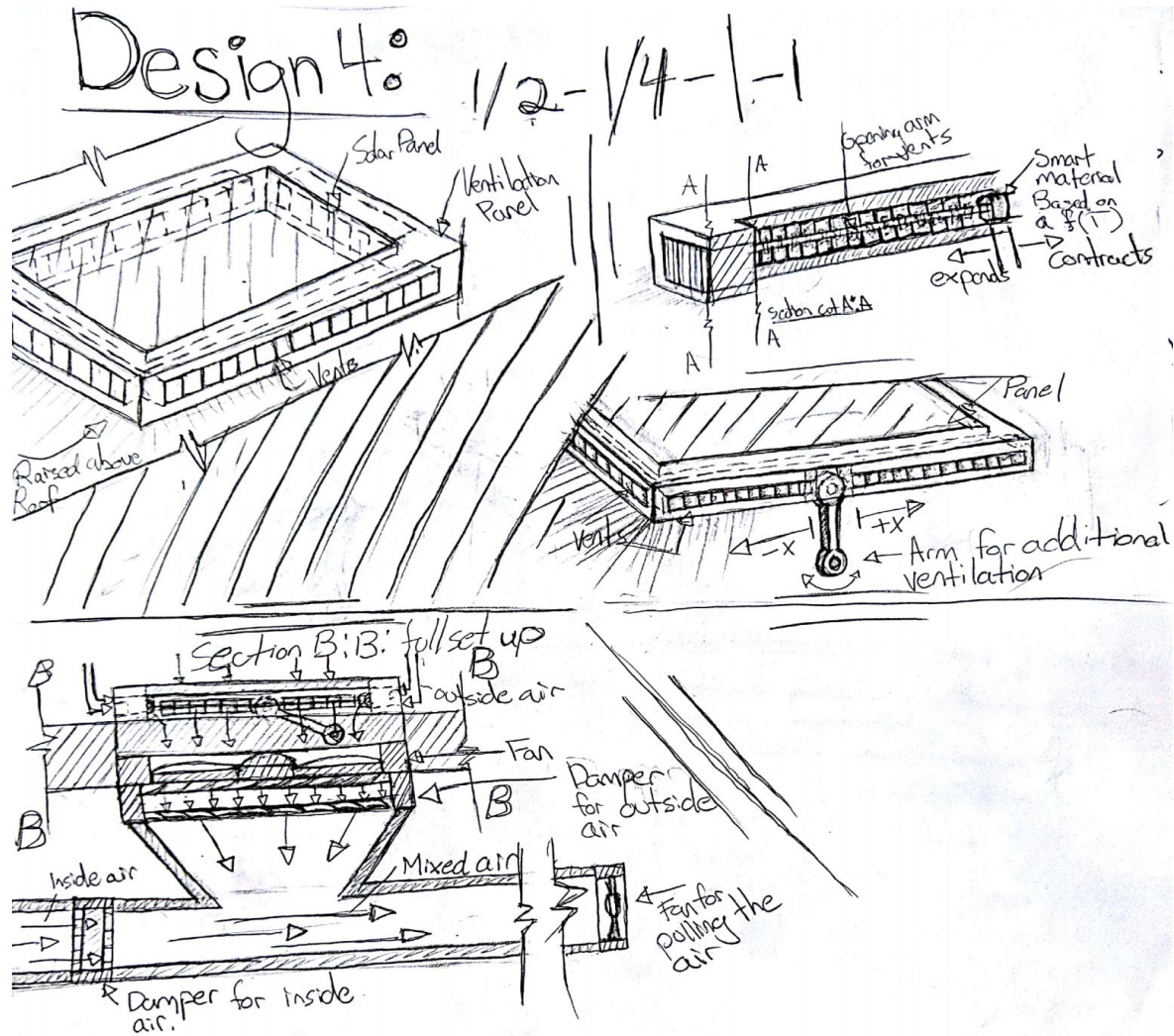


Figure C.5: Design Four Generated via Morph Matrix

Table C.6: Advantages and Disadvantages of Systems

System	Advantages	Disadvantages
Figure C.2	<ul style="list-style-type: none"> • Bio-inspired • Provides same services as current system • Can regulate intake of air 	<ul style="list-style-type: none"> • Might generate lots of noise with motors • Does not generate solar energy
Figure C.3	<ul style="list-style-type: none"> • Bio-inspired • Provides same services as current system • Can regulate intake of air • Generates solar energy 	<ul style="list-style-type: none"> • Might generate lots of noise with motors
Figure C.4	<ul style="list-style-type: none"> • Bio-inspired • Provides same services as current system • Can regulate intake of air • Generates solar energy 	<ul style="list-style-type: none"> • Might generate lots of noise with motors • Complicated to implement gear trains • High maintenance
Figure C.5	<ul style="list-style-type: none"> • Bio-inspired • Provides same services as current system • Provides adequate ventilation • Can regulate intake of air • Generates solar energy 	<ul style="list-style-type: none"> • Might generate lots of noise with motors

APPENDIX D

			Figure 3		Figure 4		Figure 5		Figure 6	
Customer Needs	Weight (%)	Score	Weighted Score	Score	Weighted Score	Score	Weighted Score	Score	Weighted Score	
Must be bio-inspired	0.25	100	25	85	21.25	100	25	100	25	
Must increase energy efficiency	0.25	95	23.75	90	22.5	90	22.5	70	17.5	
Must have a short pay-off	0.12	20	5	70	17.5	70	17.5	60	15	
Must provide the same services as current system	0.05	50	12.5	30	7.5	70	17.5	50	12.5	
Must be easy to maintain	0.08	85	21.25	80	20	85	21.25	50	12.5	
Must be space efficient	0.05	90	22.5	95	23.75	85	21.25	90	22.5	
Must not generate excess noise pollution	0.05	95	23.75	100	25	80	20	70	17.5	
Must have adjustable times	0.05	30	7.5	0	0	0	0	30	7.5	
Must be safe	0.1	90	22.5	90	22.5	90	22.5	85	21.25	
Total	1	655	163.75	640	160	670	167.5	605	151.25	
			Figure 7	Figure 9		Figure 10		Figure 11		
Customer Needs	Weight (%)	Score	Weighted Score	Score	Weighted Score	Score	Weighted Score	Score	Weighted Score	
Must be bio-inspired	0.25	100	25	80	20	100	25	95	23.75	
Must increase energy efficiency	0.25	90	22.5	90	22.5	85	21.25	90	22.5	
Must have a short pay-off	0.12	70	17.5	50	12.5	50	12.5	50	12.5	
Must provide the same services as current system	0.05	70	17.5	60	15	65	16.25	60	15	
Must be easy to maintain	0.08	85	21.25	75	18.75	80	20	50	12.5	
Must be space efficient	0.05	80	20	80	20	85	21.25	85	21.25	
Must not generate excess noise pollution	0.05	90	22.5	80	20	75	18.75	60	15	
Must have adjustable times	0.05	0	0	90	22.5	90	22.5	60	15	
Must be safe	0.1	95	23.75	85	21.25	85	21.25	85	21.25	
Total	1	680	170	690	172.5	715	178.75	635	158.75	

Figure D.1: Decision Matrix for Concepts 1-8

APPENDIX E

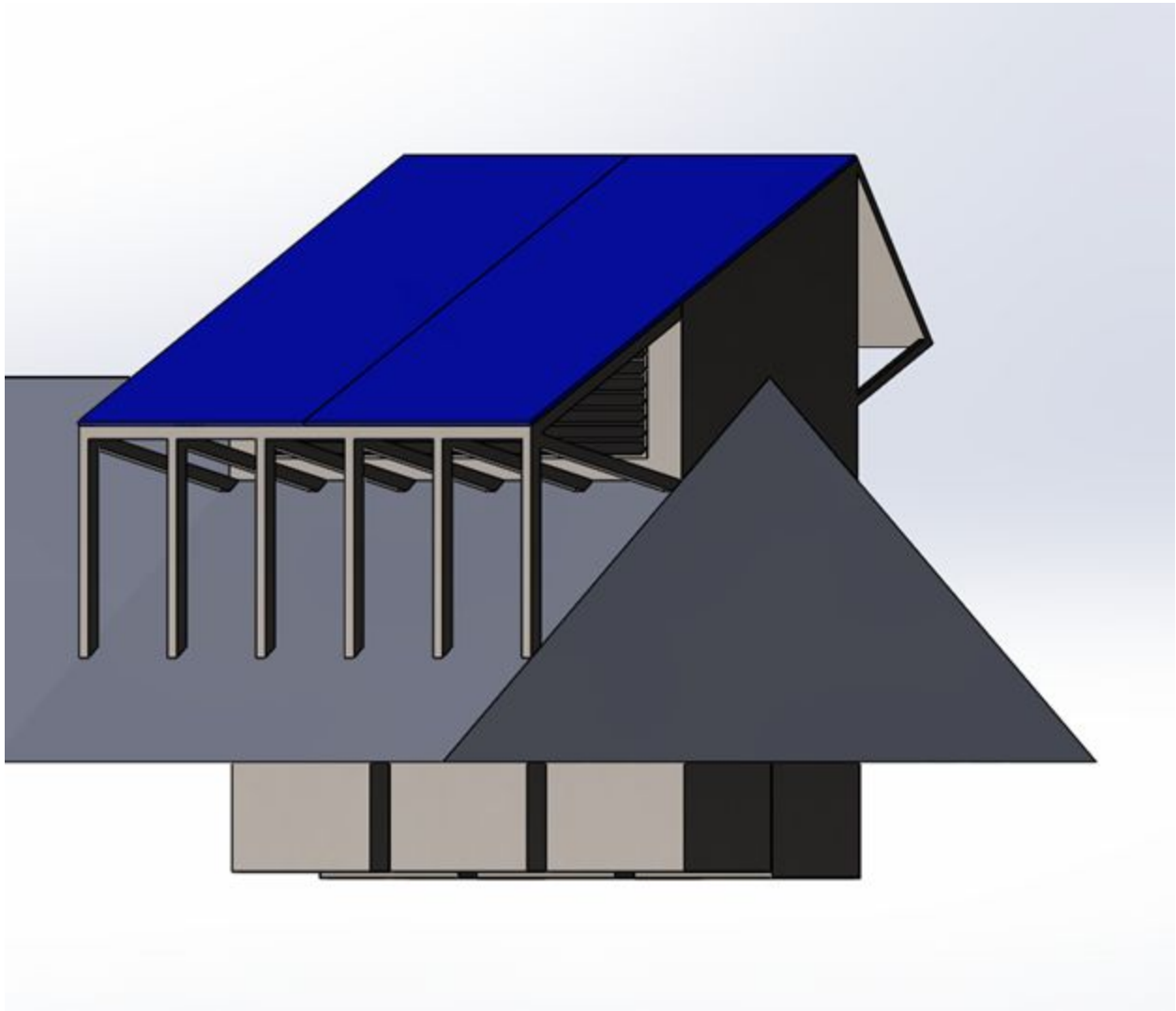


Figure E1: Quartering South Face with solar panels attached. On roof structure attached to 3 intake ducts.

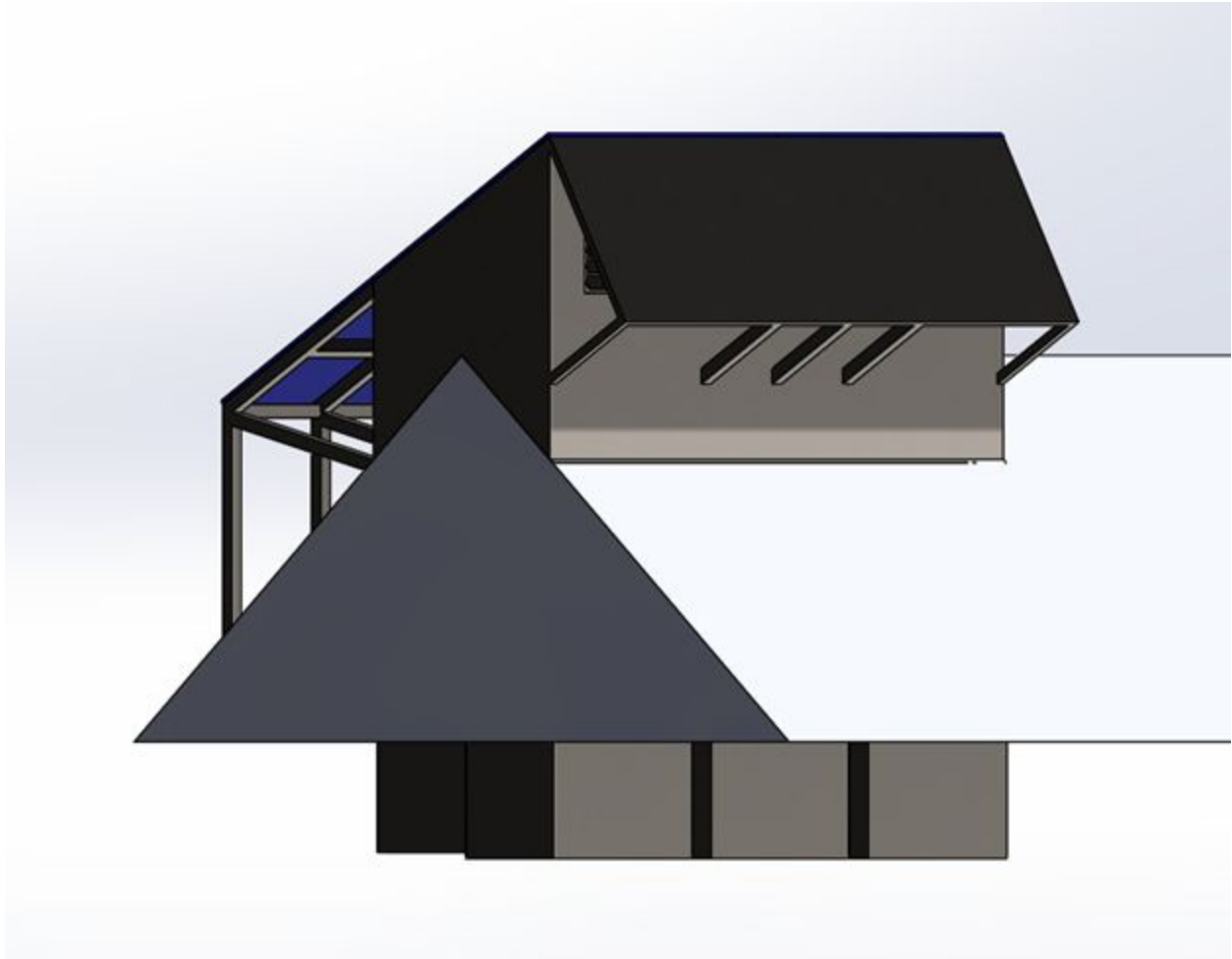


Figure E2: Quartering North Face of final design sitting on roof attached to 3 exhaust ducts

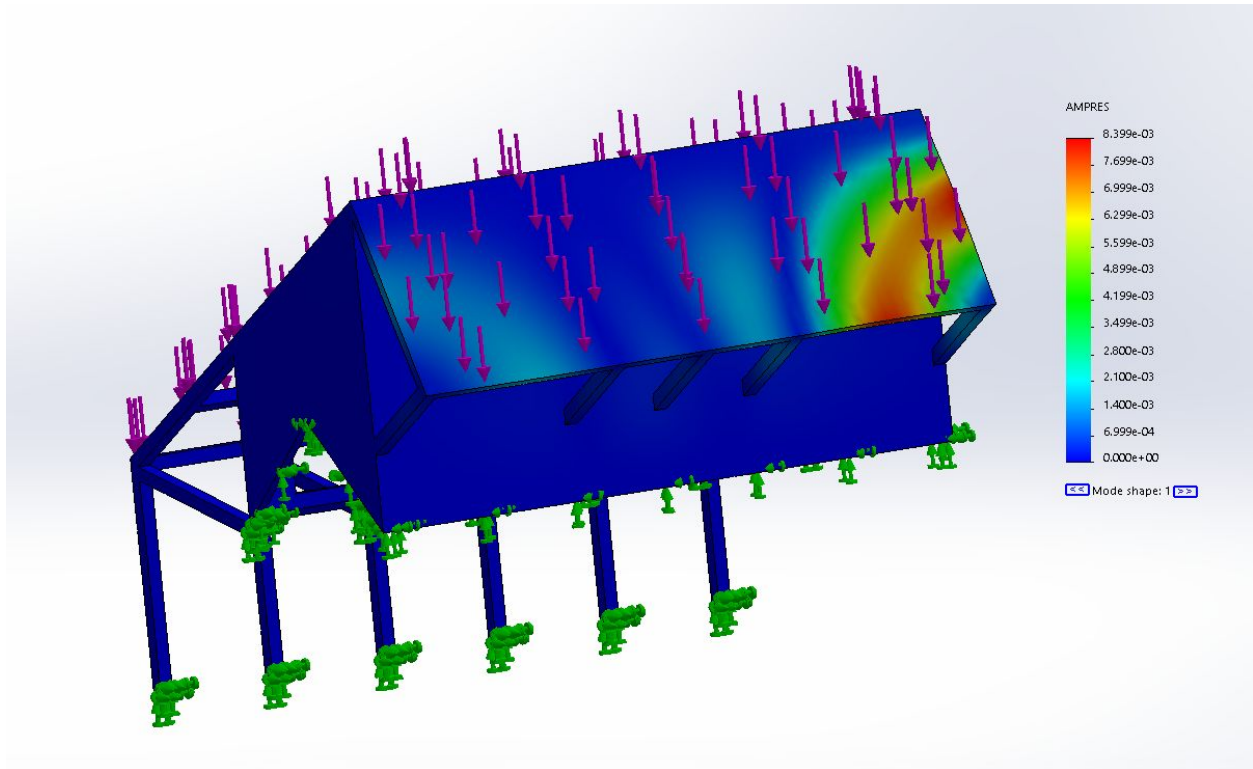
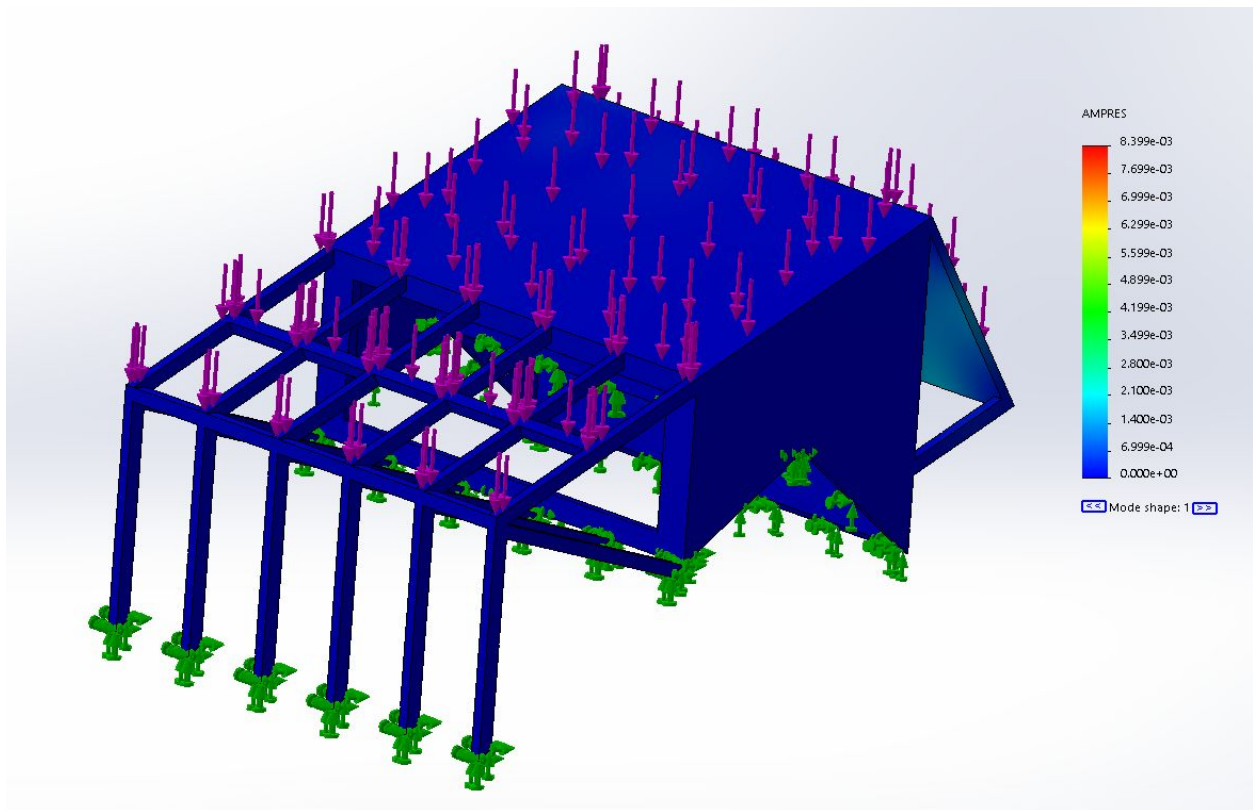
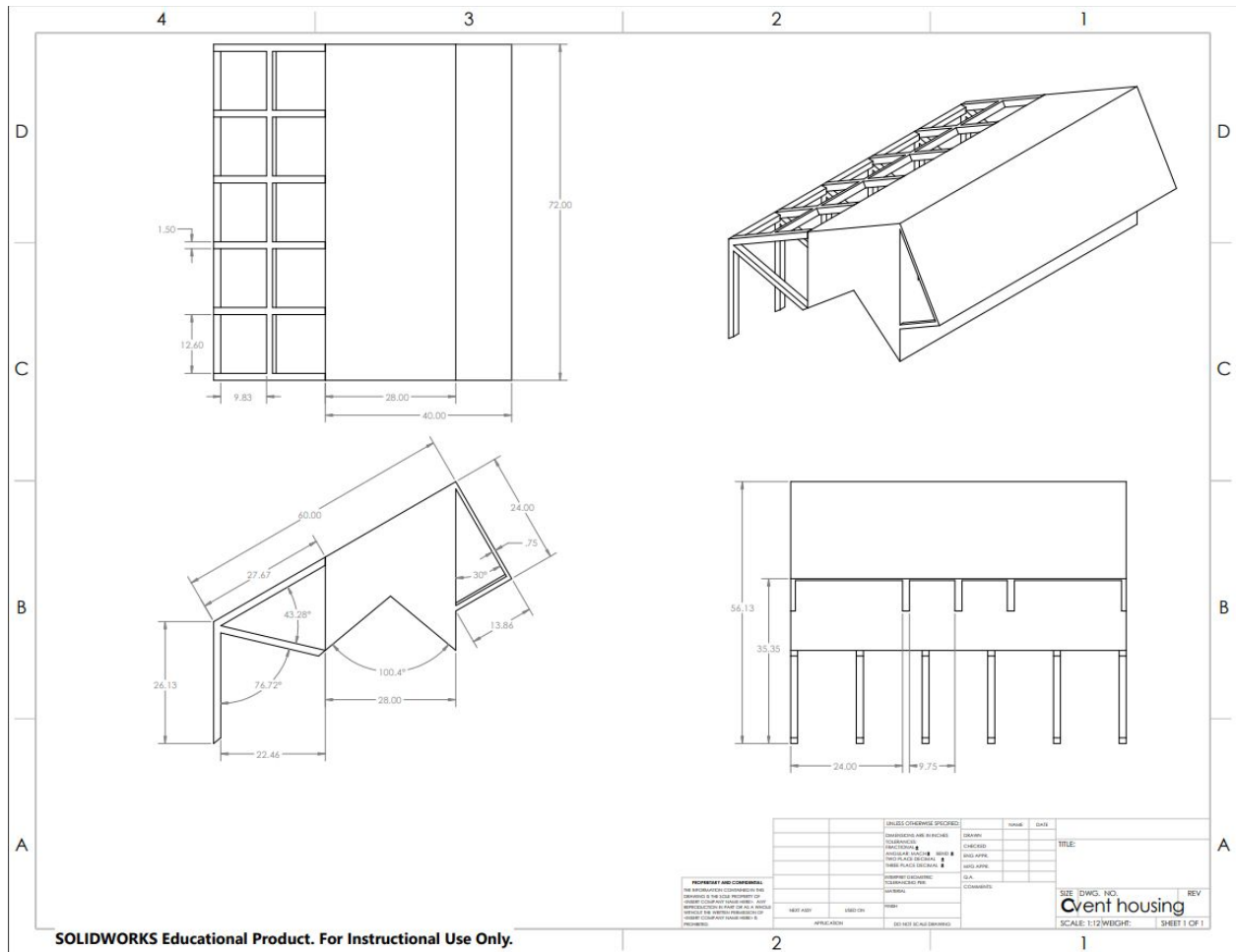


Figure E3: Stress analysis of 6ft snow load on structure.



APPENDIX F

Table F1: Bill of Materials

Bill of Materials						
Team		Bio Inspired Energy Efficiency				
Part #	Part Name	Qty	Description	Functions	Material	Link to Cost estimate
1	Frame	4	Structure of design	Structural Integratvey	A500 Square Steel Tube	https://www.metalsdepot.com/steel-products/steel-square-tube/?cid=Cj0KCQIarentBRCoARsAFc1FqdhaOsaj8mmPqN66L11h9nl7oxGVXlLfY-YzKZQzeZdfmu3RyMtaAqOu
2	Paneling	3	Side and top sheets	Protects Against Weather	Galvanized Steel Sheet	https://www.metalsdepot.com/steel-products/steel-sheet
3	Solar Panel	2	Panel to collect solar	Collects Solar power to AC	Solar Panel	https://www.wholesalesolar.com/2931725/sma/inverters
4	Inverters	2	Power converter	Converts incoming air into building	Inverter	https://www.wholesalesolar.com/2931725/sma/inverters
5	Filters	6	HVAC Filter	Distributes air into building	Filter	https://www.alliedelec.com/ebm-dapst-55416-27250/701050937mkwid=sNCm3u1fw&cid=3098076097298pkv
6	Fan/Blower	2	Cross Flow Blower	Blower	108 X 201 X 90 mm	https://www.kelloasresearchlabs.com/Nitinol/Nitinol-spr
7	Material	5	material	Actuate vents	Nitinol Torsional Spring	https://www.kelloasresearchlabs.com/Nitinol/Nitinol-spr
Total Cost Estimate						\$2,394.80